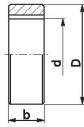


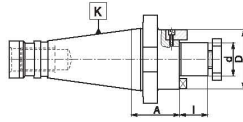
Type 7285



■ Arbor solid spacers for milling machine arbors

Code No.	d	D	b
800001312	16	26	1
800001313	16	27	2
800001314	16	27	3
800001315	16	27	6
800001316	16	27	10
800001317	16	27	20
800001318	16	27	30
800001320	22	33	1
800001321	22	34	2
800001322	22	34	3
800001323	22	34	6
800001324	22	34	10
800001325	22	34	20
800001326	22	34	30
800001327	22	34	60
800001328	27	40	1
800001329	27	41	2
800001330	27	41	3
800001331	27	41	6
800001332	27	41	10
800001333	27	41	20
800001334	27	41	30
800001335	27	41	60
800001336	27	41	100
800001337	32	46	1
800001338	32	47	2
800001339	32	47	3
800001340	32	47	6
800001341	32	47	10
800001345	32	47	20
800001342	32	47	30
800001343	32	47	60
800001344	32	47	100
800001346	40	54	1
800001347	40	55	2
800001348	40	55	3
800001349	40	55	6
800001350	40	55	10
800001354	40	55	20
800001351	40	55	30
800001352	40	55	60
800001353	40	55	100
800001355	50	68	1
800001356	50	69	2
800001357	50	69	3
800001358	50	69	6
800001359	50	69	10
800001363	50	69	20
800001360	50	69	30
800001361	50	69	60
800001362	50	69	100
800001364	60	83	1
800001365	60	84	2
800001366	60	84	3
800001367	60	84	6
800001368	60	84	10
800001369	60	84	20
800001370	60	84	30
800001372	60	84	60
800001373	60	84	100

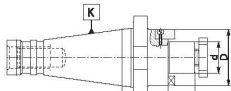
Type 7311



■ Shell mill adapters for cutters with driving slot DIN 138

Code No.	K 7:24	d	A	I	D	Adapter	Cutter
800001385	30	16	35	17	32	U-0620/0	S-2117/0
800001386	30	22	35	19	40	U-0621/0	S-2121/0
800001387	30	27	35	21	48	U-0622/0	S-2111/0
800001388	30	32	35	24	58	U-0623/0	S-2114/0
800001389	40	16	37	17	32	U-0620/0	S-2117/0
800001390	40	16	90	17	32	U-0620/0	S-2117/0
800001391	40	22	37	19	40	U-0621/0	S-2121/0
800001392	40	22	37	19	40	U-0621/0	S-2121/0
800001393	40	27	37	21	48	U-0622/0	S-2111/0
800001394	40	27	90	21	48	U-0622/0	S-2111/0
800001395	40	32	37	24	58	U-0623/0	S-2114/0
800001396	40	32	90	24	58	U-0623/0	S-2114/0
800001397	40	40	37	27	70	U-0624/0	S-2124/0
800001398	40	40	90	27	70	U-0624/0	S-2124/0
800001399	50	22	40	19	40	U-0621/0	S-2121/0
800001400	50	22	100	19	40	U-0621/0	S-2121/0
800001401	50	27	40	21	48	U-0622/0	S-2111/0
800001402	50	27	100	21	48	U-0622/0	S-2111/0
800001403	50	32	40	24	58	U-0623/0	S-2114/0
800001404	50	32	100	24	58	U-0623/0	S-2114/0
800001405	50	40	40	27	70	U-0624/0	S-2124/0
800001406	50	40	100	27	70	U-0624/0	S-2124/0
800001407	50	50	40	30	90	U-0625/0	U-5974/0
800001408	50	50	100	30	90	U-0625/0	U-5974/0

Type 7311 QC



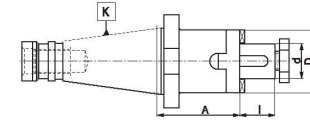
■ Quick Change
■ Shell mill adapters for cutters with driving slot DIN 138

Code No.	K 7:24	d	A	I	D	Adapter	Cutter
800001409	30	16	45	17	32	U-0620/0	S-2117/0
800001410	30	22	45	19	40	U-0621/0	S-2121/0
800001411	30	27	45	21	48	U-0622/0	S-2111/0
800001412	30	32	45	24	58	U-0623/0	S-2114/0
800001413	40	16	50	17	32	U-0620/0	S-2117/0
800001414	40	16	90	17	32	U-0620/0	S-2117/0
800001415	40	22	50	19	40	U-0621/0	S-2121/0
800001416	40	22	90	19	40	U-0621/0	S-2121/0
800001417	40	27	50	21	48	U-0622/0	S-2111/0
800001418	40	27	90	21	48	U-0622/0	S-2111/0
800001419	40	32	50	24	58	U-0623/0	S-2114/0
800001420	40	32	90	24	58	U-0623/0	S-2114/0
800001421	40	40	50	27	70	U-0624/0	S-2124/0
800001422	40	40	90	27	70	U-0624/0	S-2124/0

Type 7332



■ Combination shell mill adapters for cutters with keyway or driving slot DIN 138



Code No.	K 7:24	d	A	I	D	Adapter	Adapter	Adapter
800001439	30	16	35	17	32	U-0620/0	U-1364/0	U-1355/0
800001440	30	16	50	17	32	U-0620/0	U-1364/0	U-1355/0
800001441	30	16	73	17	32	U-0620/0	U-1364/0	U-1355/0
800001442	30	22	35	19	40	U-0621/0	U-1365/0	U-1356/0
800001443	30	22	50	19	40	U-0621/0	U-1365/0	U-1356/0
800001444	30	22	73	19	40	U-0621/0	U-1365/0	U-1356/0
800001445	30	27	35	21	48	U-0622/0	U-1366/0	U-1357/0
800001446	30	27	50	21	48	U-0622/0	U-1366/0	U-1357/0
800001447	30	27	73	21	48	U-0622/0	U-1366/0	U-1357/0
800001448	30	32	50	24	58	U-0623/0	U-1367/0	U-1358/0
800001449	40	16	37	17	32	U-0620/0	U-1364/0	U-1355/0
800001450	40	16	52	17	32	U-0620/0	U-1364/0	U-1355/0
800001451	40	16	75	17	32	U-0620/0	U-1364/0	U-1355/0
800001452	40	22	37	19	40	U-0621/0	U-1365/0	U-1356/0
800001453	40	22	52	19	40	U-0621/0	U-1365/0	U-1356/0
800001454	40	22	75	19	40	U-0621/0	U-1365/0	U-1356/0
800001455	40	27	37	21	48	U-0622/0	U-1366/0	U-1357/0
800001456	40	27	52	21	48	U-0622/0	U-1366/0	U-1357/0
800001457	40	27	75	21	48	U-0622/0	U-1366/0	U-1357/0
800001458	40	32	41	24	58	U-0623/0	U-1367/0	U-1358/0
800001459	40	32	52	24	58	U-0623/0	U-1367/0	U-1358/0
800001460	40	32	75	24	58	U-0623/0	U-1367/0	U-1358/0
800001461	40	40	45	27	70	U-0624/0	U-1368/0	U-1359/0
800001462	40	40	52	27	70	U-0624/0	U-1368/0	U-1359/0
800001463	40	40	75	27	70	U-0624/0	U-1368/0	U-1359/0
800001464	50	16	55	17	32	U-0620/0	U-1364/0	U-1355/0
800001465	50	16	78	17	32	U-0620/0	U-1364/0	U-1355/0
800001466	50	22	55	19	40	U-0621/0	U-1365/0	U-1356/0
800001467	50	22	78	19	40	U-0621/0	U-1365/0	U-1356/0
800001468	50	27	55	21	48	U-0622/0	U-1366/0	U-1357/0
800001469	50	27	78	21	48	U-0622/0	U-1366/0	U-1357/0
800001470	50	32	55	24	58	U-0623/0	U-1367/0	U-1358/0
800001471	50	32	78	24	58	U-0623/0	U-1367/0	U-1358/0
800001472	50	40	55	27	70	U-0624/0	U-1368/0	U-1359/0
800001473	50	40	78	27	70	U-0624/0	U-1368/0	U-1359/0
800001474	50	50	55	30	90	U-0625/0	U-1369/0	U-1360/0
800001475	50	50	78	30	90	U-0625/0	U-1369/0	U-1360/0

1
2
3
4
5
6

7332
7311
7285
7311 QC