

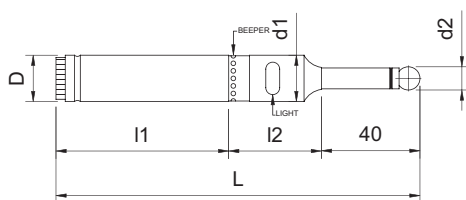
Touch Point Sensor



Edge Finder with Beeper & Optical



- No need to rotate while measuring.
- The red light was sealed with setting red-glu; it can concentrate the light and resist water.
- The sensor beeps while the red light is on.
- The sensor will beep when the user couldn't see the reverse side or get a clear sight.
- Example. If sensor's light is working, visually you couldn't see inside of the inner hole, while probing the user can be warned by the beeper.
- When probe the deep hole, you can't see the red light, but you can hear the sound from beeper.
- Accuracy: within $\pm 0.005\text{mm}$.



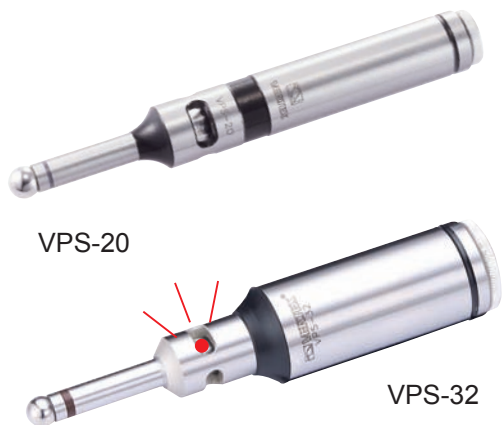
OPTICAL TYPE WITH BEEPER

Unit:mm

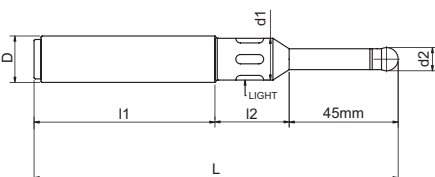
ORDER NO.	D	d1	d2	L	l1	l2	BATTERY TYPE	WEIGHT (kg)	CODE NO.
VPS-20B	$\varnothing 20$	18	10	157	77	41	UM-5#(SP) x1PCS/12V	0.4	3402-001
VPS-32B	$\varnothing 32$	18	10	157	74	41		0.7	3402-002

Touch Point Sensor

With Out Beeper Optical Type



- High sensitivity position sensor.
- Red pilot can be seen clearly.
- Whole travel of red pilot is sparkling, detecting also can be done during turning while spindle stops.
- Location of end surface, outer circle dia., inner circle dia. of the work-piece for processing can be detected with full effect.
- Devised with safety line excess, ball supported by spring, so even line excess, it will be sepatated easily from the base shown as the fig.
- The precision will reach up to micrometer while the ball returns to center position.
- Edge Finder

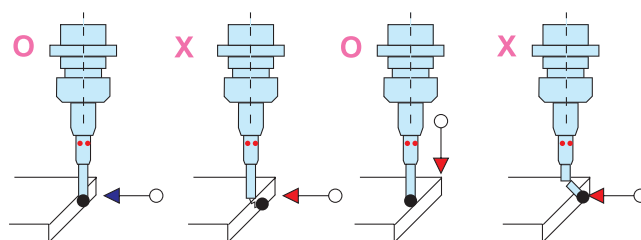
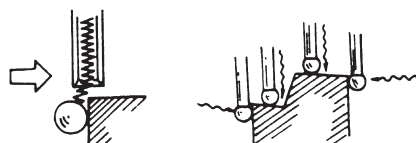


OPTICAL TYPE

Unit:mm

ORDER NO.	D	d1	d2	L	l1	l2	BATTERY TYPE	WEIGHT (kg)	CODE NO.
VPS-20	20	18	10	157	76	33	UM-5#(SP) x2P/R1./1.5V	0.4	3402-003
VPS-32	32	18	10	157	74	41		0.7	3402-004

Fig.



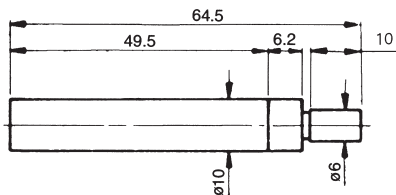
Touch Point Sensor



Edge Finder



VPS-201



This series is a high precision setting device for positioning the accurate center between tool spindle of machine and reference surface of working at low-cost and saving time.

Accuracy : within ± 0.005 mm

Made of tool steel, hardened and ground.

Suitable rotation speed : VPS-201 450 to 600rpm.

VPS-401 600 to 1,000 rpm

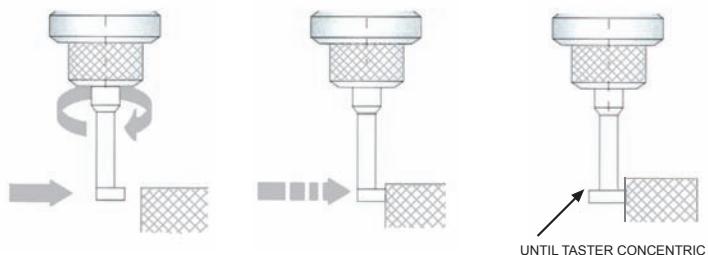


CREAMIC TYPE VPS-201C



MECHANICAL TYPE

ORDER NO.	VPS-201	VPS-201C
WEIGHT (KG)	0.03	0.06
CODE NO.	3402-005	3402-007



TOUCH POINT SENSOR

Touch Point Sensor

Deluxe Type



VPS-401



STEEL



VPS-401C

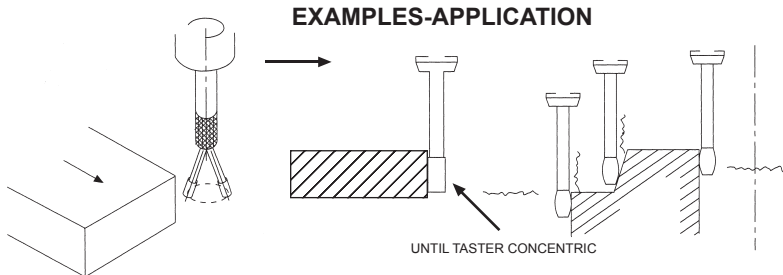
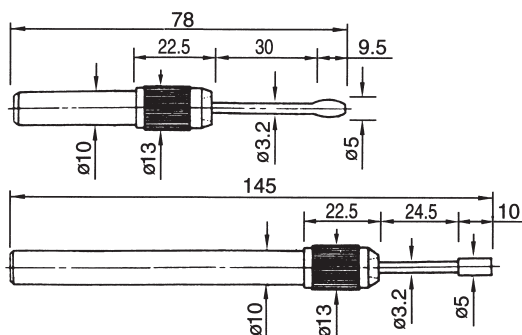
CERAMIC

FEATURES:

- Material: high-carbon steel.
- Accuracy: within ± 0.003 mm
- Hardness: HRC $58^{\circ} \pm 1^{\circ}$
- R.P.M. Within 600-1000
- Suitable for milling machine. Drill machine and boring machine.
- Edge Finder

VPS-401 (2 PCS/SET)
VPS-402A(LONG) SINGLE
VPS-402B(SHORT) SINGLE

ORDER NO.	VPS-401	VPS-401C
PCS/SET	2PCS/SET	2PCS/SET
MATERIAL	STEEL	CERAMIC
WEIGHT (KG)	0.26	0.26
CODE NO.	3402-006	3402-008



EXAMPLES-APPLICATION

Touch Point Sensor



MECHANICAL TYPE



VPS-301



VPS-302



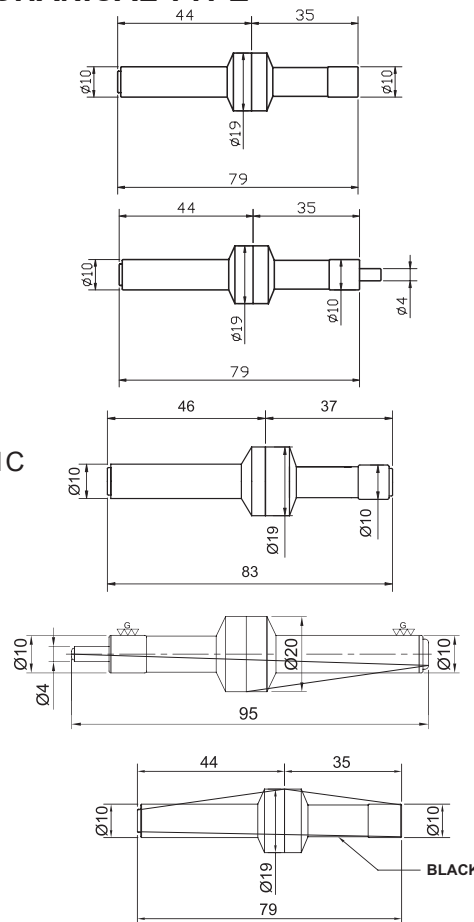
CERAMIC TYPE VPS-301C



VPS-302C



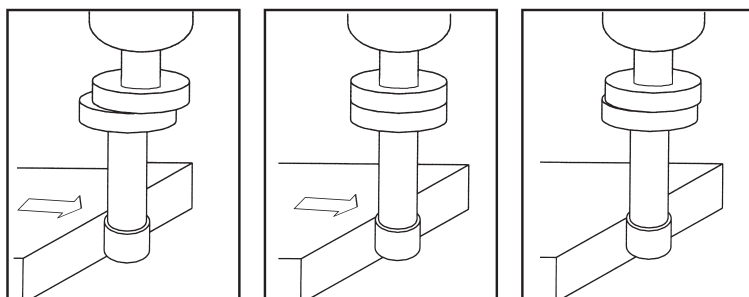
VPS-303



NEW

NEW

- Accuracy of zero point to point is within $\pm 0.003\text{mm}$
- R.P.M. within 450-600.
- Max. flange can be clear your sight sense.
- MIN.(4mm) can be test mini hole for your workpiece.



Spindle runs about 500rpm. move spindle closed to measuring surface.

When measuring probe touches workpiece, it looks in one part.

When the probe and shank are in alignment, probe will slide out of rotating center. Now, the center spindle is located 5mm away from measuring surface

ORDER NO.	MATERIAL	HARDNESS	WEIGHT (kg)	CODE NO.
VPS-301	ALLOY STEEL	HRC 56°	0.06	3402-100
VPS-302			0.05	3402-101
VPS-301S	STAINLESS	HRC 60°	0.06	3402-102
VPS-302S			0.06	3402-103
VPS-301C	CERAMIC	HRC 60°	0.06	3402-104
VPS-302C	CERAMIC	HRC 60°	0.06	3402-105
VPS-303		HRC 56°	0.06	3402-106

Centering Indicator

ORDER NO.VCI-170 CODE NO.3402-130



(WITH STOP BAR FOR FIXING THE HEAD)



- RPM Within 800.
- Use for Internal or External.
- Use for Vertical or Horizontal.
- While Spindle Rotates, With Stop bar for Fixing The Head The Centering Indicator Always faces the operator.

Shank	ø10	m/m
Length	170	m/m
Internal	ø4~ø108	m/m
External	ø0~ø108	m/m
Min. Indicator	0.01	m/m
Indicator Range	0~6	m/m
Weight	0.8	kgs

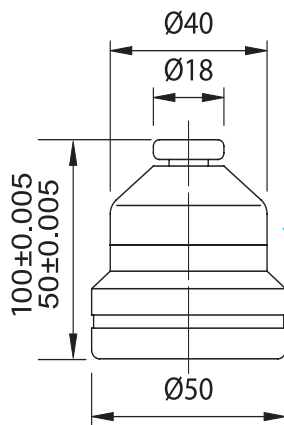
Height Presetter



OPTICAL TYPE



MODEL For NEXT



HP-50Z BATTERY
LR4476AG13
1SET/2PCS
HP-50ZM
LR44
1SET/2PCS

LIGHT OPTICAL



THIS TYPE NEED TO TCHECK STOCK AVAILABLE

- Height 50 mm and 100 mm.
- With Magnetic base.
- The red lamp will be lighted up when touched.
- Accuracy 0.005 mm.
- Combined vertical and horizontal in a unit.
- Weight:0.7 kgs

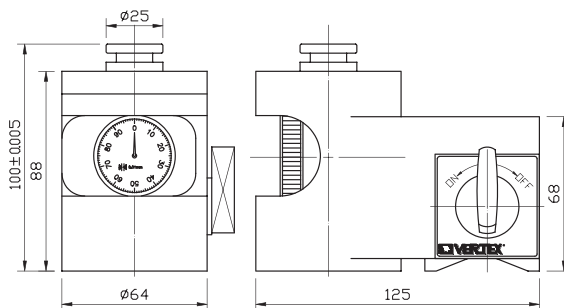
NEW

ORDER NO.	H	STYLE	WEIGHT (kg)	CODE NO.
HP-50Z	50mm	STANDARD TYPE	0.7	3403-001
HP-50ZM	50mm	WITH MAGNETIC BASE	0.7	3403-002
HP-100Z	100mm	STANDARD TYPE		3404-003
HP-100ZM	100mm	WITH MAGNETIC BASE		3404-004

HEIGHT PRESETTER

Height Presetter (For Machining Center)

ORDER NO.HP-100 CODE NO.3403-010



WITH CHECKING GAUGE

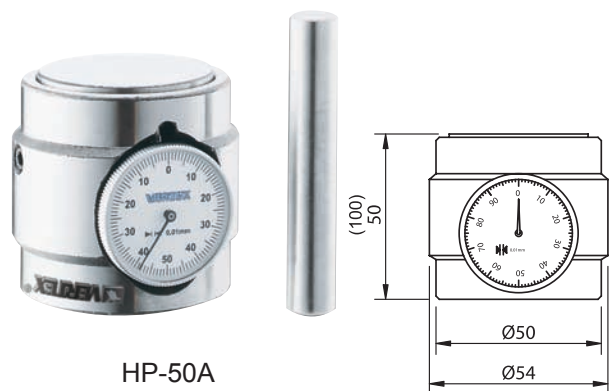
- Locate the height presetter on a place suitable for a reference surface of work piece.
- Apply the cutter on the measuring surface and slowly lower the Z-axis. Then, cutter gets near to the measuring position.
- A distance from the reference surface to the tool tip can be measured easily and precisely so that this presetter is most suitable not only for machineing centers but for NC lathes and NC milling machines.

* Magnetic base function can be used in vertical position & horizontal position.

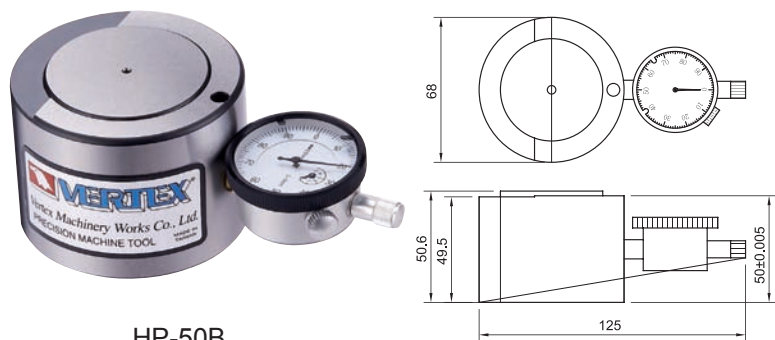
* HEIGHT:100mm±0.005 , 1 scale 0.01mm

Height from reference surface	WEIGHT(kgs)
100mm	2.6

Z-Zero-Setter



HP-50A



HP-50B



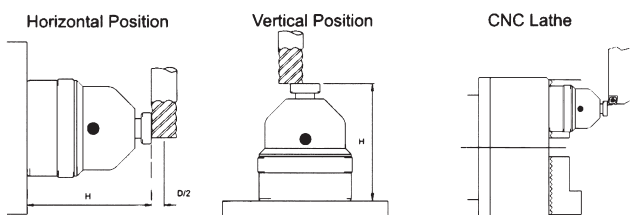
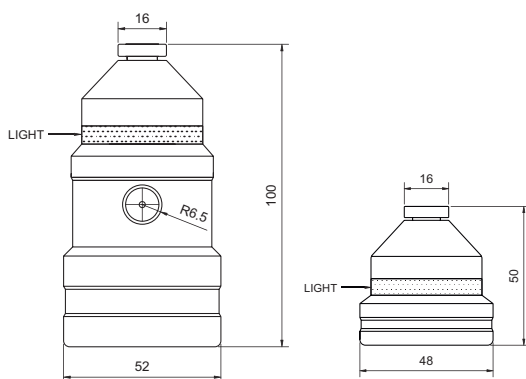
- Have the central measuring part of the zero setter presetter against a plain surface and aligned if with the outer reference surface. Turn the dial gauge for zero setting.
- Have the cutter touched against the z zero setter. Once the indicator position at zero, the distance between the tool tip to workpiece is 50mm, ± 0.005 , 100 mm, ± 0.005 .

NEW

ORDER NO.	H	STYLE	WEIGHT (kg)	CODE NO.
HP-50A	50mm	STANDARD TYPE	1.1	3403-020
HP-50B			1.7	3403-021
HP-50AM		WITH MAGNETIC BASE	1.2	3403-022
HP-50BM			1.7	3403-023
HP-100A	100mm	STANDARD TYPE		3403-024
HP-100AM		WITH MAGNETIC BASE		3403-025

Electronic Tool Length Setter

STAINLESS STEEL BASE WITH MAGNET



- **HIGH ACCURACY**
- **EASY OPERATION**

- Be sure to remove all chips and all from the sensor plate and the base of the HP-50E as well as from the workpiece and tool.
- To move the tool approaching the sensor plate slowly.
- When touching, the "LED" turns on immediately and "H" is just 50.00 mm.(or2")
- LED will not function if batteries are not set in correctly.
- Designed to be used on ferrous and non-ferrous materials.

ORDER NO.	H	STYLE	WEIGHT (kg)	CODE NO.
HP-50EM	50mm	WITH MAGNETIC BASE	0.3	3403-032
HP-100EM	100mm		1.2	3403-033

Stainless Steel Base With Magnet

TOOL PRE-SETTER FOR MACHINING CENTERS. CNC & STANDARD MILLING MACHINES AND CNC & STANDARD LATHES

Tool Presetter



ORDER NO.TP-3040E CODE NO.3405-400

TP-3040E ECONOMICAL-TYPE TOOL PRESETTER

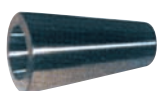
- Z axis is provided the Square Carriage and treated by special scratch.
- The base of X axis is provided the Dove Tail Slot which is grind and treated by special scratch to ensure the durability of parallelism.
- Spindle sizes can be changed by using different sleeves(BT#50,#40, #30) to inspect different sizes of tools. The tool presetter of standard sleeve is BT-50
- The optional sleeve is O.D. BT-50 x I.D. BT-40 and O.D. BT-50 x I.D. BT-30
- Digimatic Readout is provided to display the measuring size.

STANDARD ACCESSORIES

- Digimatic Readout (XxZ:200x450m/m)
- Test Arbor BT#50(DxL:50x250mm)
- Dial Gauge (2 sets) 0.01mm
- Protective Dust-Resistance Plastic Cover

OPTIONAL ACCESSORIES

1.SLEEVE



2.TEST ARBOR



ORDER NO.	SIZE	CODE NO.
S50-40	BT-50XBT-40	3405-410
S50-30	BT-50XBT-30	3405-411

ORDER NO.	SIZE	CODE NO.
A50	BT-50	3405-412
A40	BT-40	3405-413
A30	BT-30	3405-414



SPECIFICATIONS

Range of measurement	D:300m, L:400mm
Graduation	Xaxis:0.01 mm
	Zaxis:0.01 mm
Machine Size (LxWxH)	662x222x862 mm
G.W	135kgs

Tool Presetter

ORDER NO.TP-3040 CODE NO.3405-401

TP-3040 DELUXE-TYPE TOOL PRESETTER

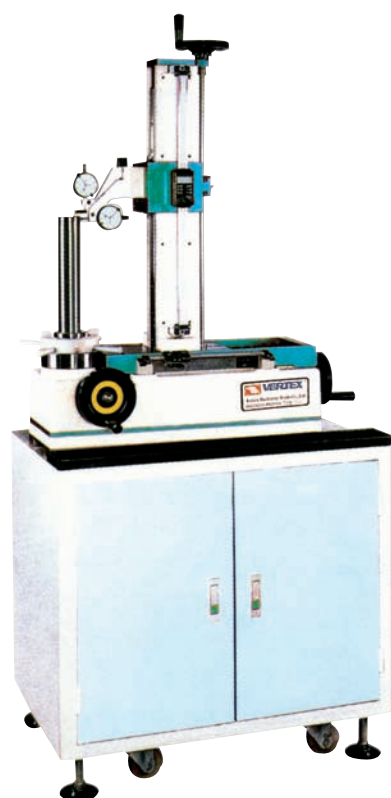
- The Z spindle use Swiss made non-pitch screw pole can quick move and minor adjustment. Move slightly and swiftly.
- The special equipment "Lock Up Setting" is installed around the spindle to reduce the aberration when measuring.
- Spindle sizes can be changed by using different sleeves to inspect different sizes of tools..
- The standard of sleeve is BT-50, the optional is O.D. BT-50 x I.D. BT-40, O.D. BT-50 x I.D. BT-30
- Germany Digimatic Readout is provided on X axis to display the measuring number.
- Ball Screw bearing Unit is provided on X axis to increase the accuracy.
- Tapered Bearing Units is provided on Z axis for making movement more smoothly.
- Precision Linear Guide is provided on Z axis for wear-resistance and long-term accuracy.

STANDARD ACCESSORIES

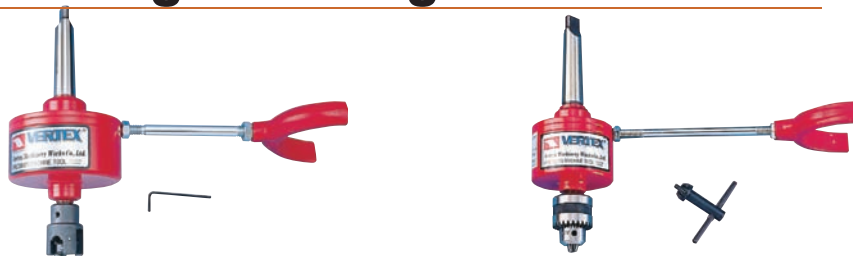
- Digimatic Readout (XxZ:200x450m/m)
- Test Arbor BT#50(DxL:50x250mm)
- Cabinet
- Dust-Resistance Plastic Cover

SPECIFICATIONS

Range of measurement	D:300m, L:400mm
Graduation	Xaxis:0.01 mm
	Zaxis:0.01 mm
Size(LxWxH)	
Machine	662x222x862 mm
Cabinet	650x500x760 mm
Weight	
Machine	110kgs
G.W	135kgs



Reversible Tapping Attachment for Drilling & Milling Machine



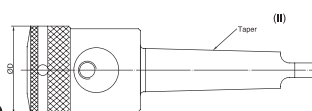
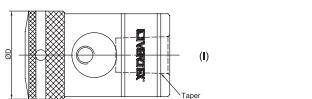
ORDER NO.	TAPPING CAPACITY	SHANK	TO WORK WITH DRILLING MACHINE	WEIGHT (KG)	PACKING mm	SPEED	CODE NO.
K1-1/2	Ø3-8mm	1/2"	DRILLING MACHINE MUST EQUIPPED WITH DRILL CHUCK CAPACITY 13M/M	0.8	90X90X190	1 : 1	3404-001
K1-MT-2	Ø3-8mm	MT-2	DRILLING MACHINE MUST EQUIPPED WITH MT-2 HOLE	1	90X90X240	1 : 1	3404-002
K2-1/2	Ø5-10mm	1/2"	DRILLING MACHINE MUST EQUIPPED WITH DRILL CHUCK CAPACITY 13M/M	1.5	100X100X210	1 : 1	3404-003
K2-MT-2	Ø5-10mm	MT-2	DRILLING MACHINE MUST EQUIPPED WITH MT2 HOLE	1.6	100X100X260	1 : 1	3404-004
K3-MT-3	Ø6-14mm	MT-3	OTHERS LIKE MT-3 SHANK BORING HOLE DRILLING MACHINE N.T. AVAILABLE	3.1	125X125X300	1 : 1	3404-005
K4-MT-3	Ø12-22mm	MT-3	OTHERS LIKE MT-3 SHANK BORING HOLE DRILLING MACHINE N.T. AVAILABLE	5.4	160X160X360	1 : 1	3404-006

K1 TYPE USED CHUCK TO FIX THE TAP

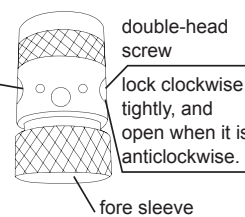
K2, K3, K4 TYPE USED THE SLIDING PLATE OF THE SQUARE SHARP HOLE TO FIX THE TAP.

Tap Chuck Series

VTA13-1
JT6



lock anticlockwise tightly, and open when it is clockwise.



- THE DESIGN CAN PREVENT THE TAPS CHUCK FROM LOOSENING AFTER TAPPING.
- SUIT FOR VARIOUS TAPS. LARGE TAPPING CAPACITY. HIGH POWER TORSION.

VTA16-3
MT2



TAP CHUCK WRENCH



Extra Purchase Welcome.

ORDER NO.	TAPPING CAPABILITY		D	Taper	N.W (kg)	CODE NO.
	mm	inch				
VTA13-1	I		43	J6	0.55	3404-000
VTA13-2	I	M3-M12	W1/8"~W1/2"	B16	0.76	3404-007
VTA13-3	II		47	MT2	0.76	3404-008
VTA16-1	I		54	J3	1	3404-016
VTA16-2	I	M3-M16	W1/8"~W5/8"	B18	1	3404-017
VTA16-3	II		48.5	MT2	0.9	3404-018
VTA16-4	II		48.5	MT3	1.1	3404-019
VTA18-2	II		51	MT2	0.924	3404-019A
VTA18-3	III	M9-M18	W3/8"~W3/4"	MT3	1.074	3404-019B
VTA18-4	IV		51	MT4	1.38	3404-019C

Drill Tapper



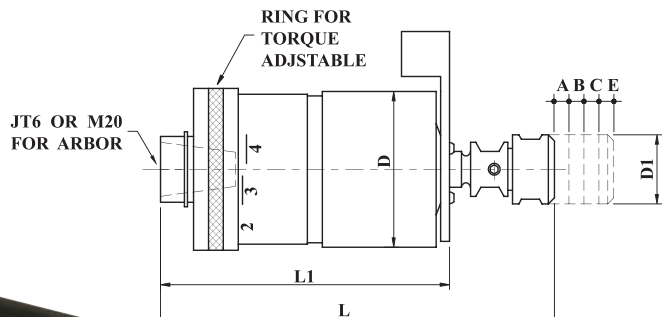
Including shank, full set of collets, wrench and case. (Used for radial drilling, lathe and tapping machines. 1 Main body, 6 Tap Collet, 1 Drill Chuck Holder Optional in Collets & Tapper Sleeves.)0.6CUFT.

Unit:mm

ORDER NO.	STANDARD ASSEMBLY SPECIFICATION				G.W. kg	MEAS. CFT	CODE NO.
	MAIN BODY 1PC/SET	TAP COLLET 6PCS/SET	TAPER SLEEVE 2PCS/SET	DRILL CHUCK HOLDER 1PC/SET			
VDT-33	MT-3	M8, 10, 12, 14, 16, 18, 20, 22, 24, 27, 30, 33(MM)	33-MT1	33-JT6 With 1/2" Drill Chuck	11.9	0.6	3404-010
	MT-4	1, 1-1/8, 1-1/4(INCH)	33-MT2		12		3404-011
	MT-5	PT1/8, 1/4, 3/8, 1/2, 3/4, 1(INCH)	33-MT3	33-MT4	12.8		3404-012



Reversible Tapping Attachments

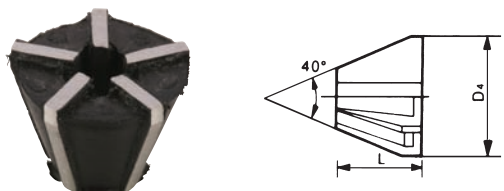


- Radial Float is SELF-CENTERING to compensate for hole center misalignment.
- Unique Double Spring Mechanism produces Automatic Feed and Cushion Drive. There are two springs for the feed and two springs for the reversal. Each set gives you double smoothness for ULTRA accurate tapping applications (not possible with this type of tapping head in the past).
- Pre-set Torque Control Permits easy operation of tap brake torque control
- JACOBS RUBBER FLEX COLLETS are standard accessory.

TAPPING ATTACHMENTS

Reversing Type

ATTACHMENT DESIGNATIONS ORDER NO.	FOR TAPS	SUITABLE ADAPTERS SIZE	REC. MAX SPEED	LENGTH COMPENSATION				D DIA	D1 DIA	L	L1	WEIGHT (kgs)	CODE NO.
				COMP A	EXP. B	EXP. C	EXP. E						
VTA7-JT6	M2-M7	FC-10/FC-11	1500RPM	5	3.5	1.5	7.0	52	23	125.5	94.5	1.3	3404-020
VTA12-JT6	M3-M12	FC-20/FC-21	1000RPM	5	4.5	1.5	8.5	73.5	28	169	122	3.1	3404-021
VTA20-M20	M8-M20	FC-30/FC-31	600RPM	5.5	5	2.0	9.0	91	38	190	128	5.7	3404-022

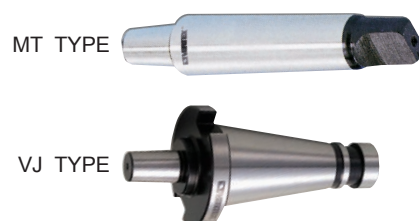


Rubber Flex Collet For VTA Tapper

ORDER NO.	COLLETS CAPACITY	D4	L	CODE NO.
FC-10	Ø 2.5 - Ø 4.5	16	11	3404-030
FC-11	Ø 4.5 - Ø 6.5	16	11	3404-031
FC-20	Ø 4 - Ø 7	21.5	13	3404-032
FC-21	Ø 7.5 - Ø 10	21.5	13	3404-033
FC-30	Ø 8.0 - Ø 16	26.5	15	3404-034
FC-31	Ø 14 - Ø 19	26.5	15	3404-035

CONNECTING ARBOR FOR VTA20-M20	
MT3-M20	3404-036A
MT4-M20	3404-037A

ARBOR EXAMPLE :



Tap Chuck



- It's suitable for various taps, so it is much more economic and efficient than other brands of taps chuck.
- The design can prevent the taps chuck from loosening after tapping.

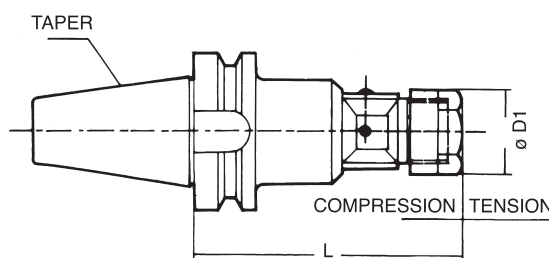
Unit:mm

ORDER NO.	SIZE	TAPPING CAPACITY		Taper Mount NO. DIN or Jacobs	Length (m/m)	Outer Dia. (m/m)	Weight (g)	CODE NO.
		mm	inch					
VTA-13-11	1/2	M3-M12	1/8-1/2	JT6	75	42	850	3404-056A
VTA-13-12	1/2	M4-M12	1/8-1/2	B16	75	42	585	3404-057A



Expansible Tapping Holder

Compression Distance 6mm



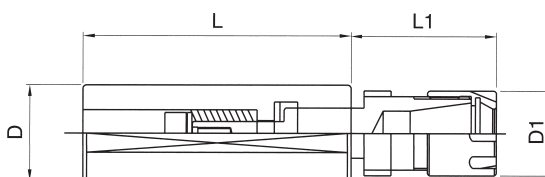
HOLDER-BT-TYPE

Unit:mm

ORDER NO.	COLLET	HOLDER (DXL)	L	D ₁	TAPPING RANGE	WEIGHT (KGS)	CODE NO.
VET-271	ER20	BT40 20X100	100	34	M2-M16	2.2	3404-026
VET-272	ER20	BT50 20X95	95	34		4	3404-027
VET-273	ER32	BT40 32X110	110	50	M3-M25	2.4	3404-028
VET-274	ER32	BT50 32X110	110	50		4.5	3404-029



WITH SPANNER



HOLDER-MINI TYPE

Unit:mm

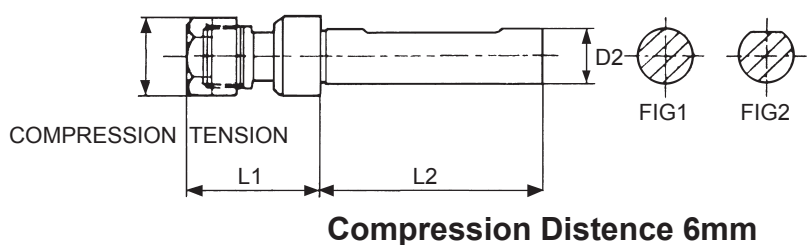
ORDER NO.	COLLET	HOLDER (DXL)	L ₁	D ₁	TAPPING RANGE	WEIGHT (KG)	CODE NO.
VET-260	ER16	ER16M 20X70	35	22	M3-M10 1/8"-3/8"	0.2	3404-036
VET-261	ER16	ER16M 25X70	35	22		0.2	3404-037

Expansible Tapping Holder



- Floating and expansion design will reduce the differential of motor rotary speed and feeding speed so will extend the life of tap.
- Use ER High Spring Collet, you don't need to worry the few size will delay working, so their value is more than any other tapping system.
- Strong Vise clamping function which is controlled by one screw will keep the outlet which have been controlled by ER collet, so it can auto-center and you own the double lock and save in clamping.
- The series. can be fitted with ER20 collet as optional accessory.

STRAIGHT SHANK

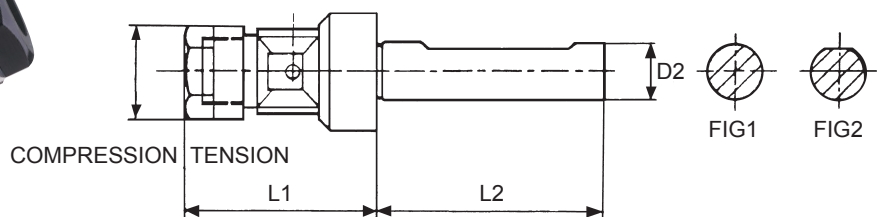


SINGLE HOLDER

Unit:mm

ORDER NO.	COLLET	HOLDER (D ₂ XL ₂)	FIG	L ₁	D ₁	TAPPING RANGE	WEIGHT (KG)	CODE NO.
VET-102	ER16	20X80	2	47	28	(1/8"-3/8")	0.4	3404-041

TAPPING HOLDER



SINGLE HOLDER

Unit:mm

ORDER NO.	COLLET	HOLDER (D ₂ XL ₂)	FIG	L ₁	D ₁	TAPPING RANGE	WEIGHT (KG)	CODE NO.
VET-202	ER20	20X80	2	70	34	M3-M16	1	3404-043
VET-252	ER20	25X80	2	70	34	(1/8-5/8")	1.2	3404-044
VET-303	ER32	32X100		90	50	(M3-M25) (1/8-1")	2	3404-045



SETS TYPE

Unit:mm

ORDER NO.	COLLET	HOLDER (D ₂ XL ₂)	SET/PCS	WEIGHT (KG)	CODE NO.
VET-105	ER16	20X80	8	1	3404-046
VET-106	ER16	20X80	10	1.1	3404-047
VET-253	ER20	20X80	10	1.6	3404-048
VET-254	ER20	20X80	12	1.7	3404-049