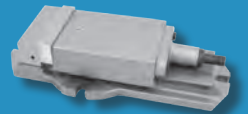
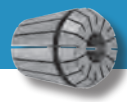
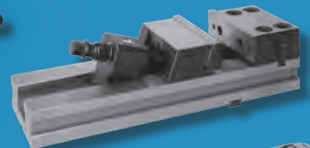
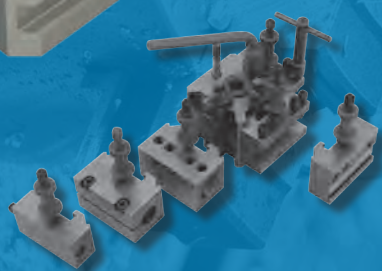
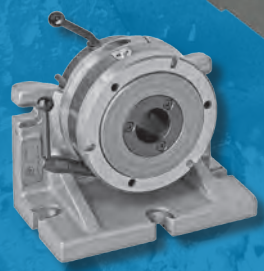
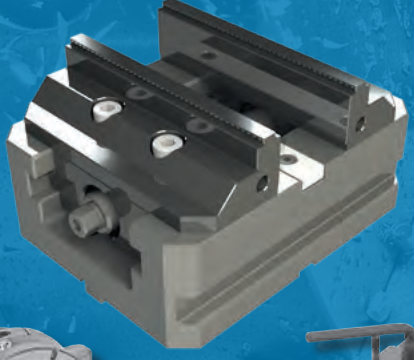
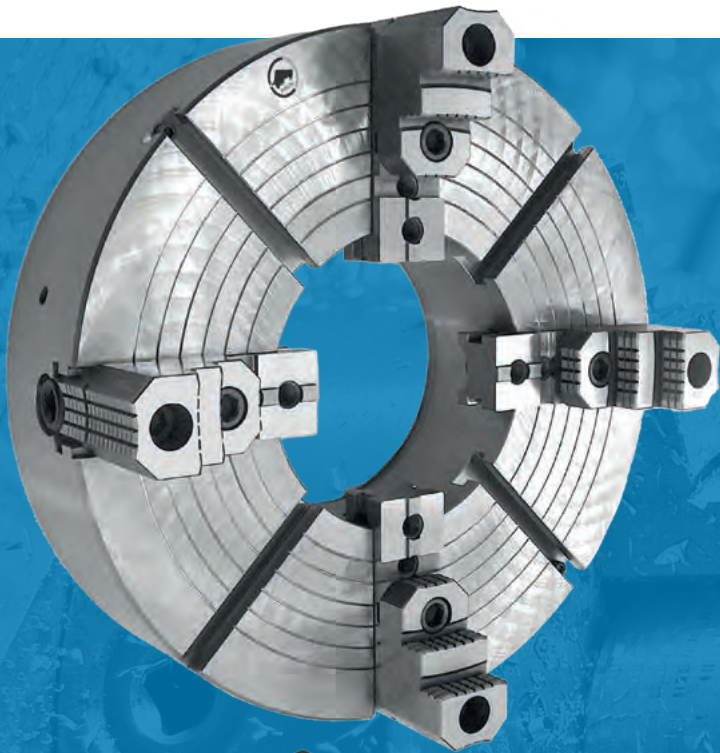




BISON





Welcome to BISON Empowered By Precision

BISON opens new manufacturing facility making it one of the most technologically advanced manufacturers of clamping solution in the world.

Not just lathe chucks

Built on over 70 years experience BISON is today one of the world's leading providers of clamping technology solutions. Founded in 1948 in Poland BISON grew to be a trusted quality supplier of self-centring chucks and vices to markets in Eastern Europe. In Western Europe and the U.S. BISON has been accepted as an influential supplier of quality clamping solutions since the early 1980s. Following privatisation in 1997 and the appointment of an international management team in 2007 the company was re-structured to increase efficiency, productivity and quality. Meanwhile, the product range has continued to expand and now includes power chucks, large & special chucks, toolholders, CNC vices and spindle tooling.

Most modern technology

As part of a major company restructuring and a huge investment of over 40 Million Euro BISON has re-located to brand new purpose built facilities within the last quarter of 2014. Our new 53.000 sqm factory for clamping solution production incorporates a new hi-tech cast iron foundry together with the most modern heat treatment facility in Europe. The Machine Shop is equipped with several state of the art multi-functional 5-axis vertical and horizontal CNC-machining centres capable of machining work pieces to 3200mm in diameter. The investment also included a significant upgrade of the inspection department to ensure our high quality is consistent and meets the demands of our customers.

Worldwide presence

In the Global marketplace BISON provides clamping solutions to over 70 countries around the world. With our network of independent national sales offices such as BISON UK, giving us a better understanding of local culture and business practices, we are able to expertly service local markets making it easier for you our valued customer.

BISON your partner for the future



New Manufacturing Plants

- 53.0000 sq meter
- Built 2014
- Over 500 employees (BISON Group)

Best of 2024

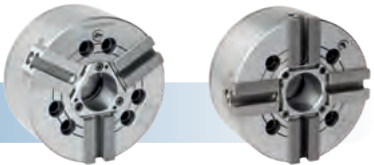
Included in this issue:

p. 2 about BISON

p. 4-9 LATHE CHUCKS



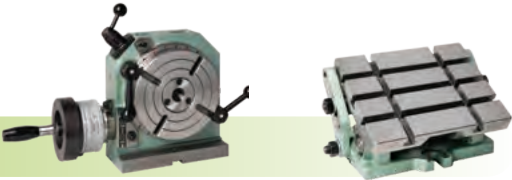
p. 10-11 POWER CHUCKS



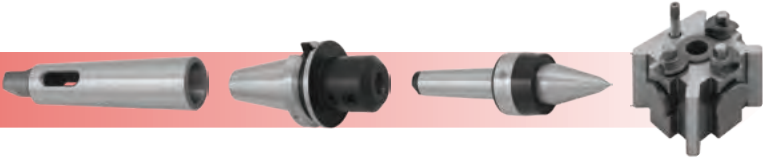
p. 12-15 VICES



p. 16-17 BOX JAWS and MILLING FIXTURE



p. 18-31 SPINDLE TOOLING and QUICKCHANGE TOOLPOSTS



p. 8, 10-11 CHUCK JAWS





Best of 2024

3204 – SELF-CENTRING SCROLL CHUCK - 3 JAW



Cast iron, plain back, rear mount, solid jaw C/W Set hard outside jaws, hard inside jaws & wrench. Ground working surfaces. Mounting from back with adapter plate.

Code	Diameter mm	Bore mm	List Price £
3204-80	80	16	389.00
3204-100	100	20	443.00
3204-125	125	32	473.00
3204-160	160	42	553.00
3204-200	200	55	695.00
3204-250	250	76	950.00
3204-315	315	103	1,415.00
3204-400	400	136	2,836.00
3204-500	500	190	4,745.00
3204-630	630	252	7,570.00

3504 – SELF-CENTRING SCROLL CHUCK - 3 JAW



Steel, plain back, rear mount, solid jaw C/W Set hard outside jaws, hard inside jaws & wrench. Ground working surfaces. Mounting from back with adapter plate.

Code	Diameter mm	Bore mm	List Price £
3504-80	80	16	547.00
3504-100	100	20	594.00
3504-125	125	35.5	772.00
3504-160	160	42	878.00
3504-200	200	55	1,077.00
3504-250	250	76	1,286.00
3504-315	315	103	1,921.00
3504-400	400	136	3,869.00
3504-500	500	190	8,494.00
3504-630	630	252	12,153.00

3274 – SELF-CENTRING SCROLL CHUCK - 3 JAW



Cast iron, plain back, front mount, solid jaw C/W Set hard outside jaws, hard inside jaws & wrench. Ground working surfaces. Mounting from back or front using an adapter plate.

Code	Diameter mm	Bore mm	List Price £
3274-80	80	16	518.00
3274-100	100	20	574.00
3274-125	125	32	636.00
3274-160	160	42	661.00
3274-200	200	55	715.00
3274-250	250	76	985.00
3274-315	315	103	1,540.00
3274-400	400	136	3,539.00
3274-500	500	190	6,339.00
3274-630	630	252	8,930.00

3575 – SELF-CENTRING SCROLL CHUCK - 3 JAW



Steel, plain back, front mount, 2 piece jaw C/W Set hard reversible jaws & wrench. Ground working surfaces. Mounting from back or front by using an adapter plate.

Code	Diameter mm	Bore mm	List Price £
3575-125	125	35.5	1,000.00
3575-160	160	42	1,024.00
3575-200	200	55	1,199.00
3575-250	250	76	1,546.00
3575-315	315	103	2,109.00
3575-400	400	136	4,278.00
3575-500	500	190	8,643.00
3575-630	630	252	13,257.00

3205 – SELF-CENTRING SCROLL CHUCK - 3 JAW



Cast iron, plain back, rear mount, 2 piece jaw C/W Set hard top reversible jaws & wrench. Ground working surfaces. Mounting from back with adapter plate.

Code	Diameter mm	Bore mm	List Price £
3205-125	125	32	594.00
3205-160	160	42	636.00
3205-200	200	55	770.00
3205-250	250	76	1,025.00
3205-315	315	103	1,446.00
3205-400	400	136	2,773.00
3205-500	500	190	4,541.00
3205-630	630	252	7,051.00

3505 – SELF-CENTRING SCROLL CHUCK - 3 JAW



Steel, plain back, rear mount, 2 piece jaw C/W Set hard top reversible jaws & wrench. Ground working surfaces. Mounting from back with adapter plate.

Code	Diameter mm	Bore mm	List Price £
3505-125	125	35.5	929.00
3505-160	160	42	979.00
3505-200	200	55	1,174.00
3505-250	250	76	1,386.00
3505-315	315	103	1,989.00
3505-400	400	136	3,812.00
3505-500	500	190	8,043.00
3505-630	630	252	11,535.00

3275 – SELF-CENTRING SCROLL CHUCK - 3 JAW



Cast iron, plain back, front mount, 2 piece jaw C/W Set hard reversible jaws & wrench. Ground working surfaces. Mounting from back or front by using an adapter plate.

Code	Diameter mm	Bore mm	List Price £
3275-125	125	32	667.00
3275-160	160	42	706.00
3275-200	200	55	802.00
3275-250	250	76	1,086.00
3275-315	315	103	1,573.00
3275-400	400	136	3,786.00
3275-500	500	190	5,966.00
3275-630	630	252	8,369.00

3266 – 3 JAW LEVER SCROLL CHUCK



For grinding twist drills and other cutting tools. Fine adjustment on sizes 125, 160 & 200mm C/W Set hard outside, hard inside jaws and lever.

Code	Diameter mm	List Price £
3266-80	80	889.00
3266-100	100	926.00
3266-125	125	1,037.00

3604 – SELF-CENTRING SCROLL CHUCK - 4 JAW



Cast iron, plain back, rear mount, solid jaw.
C/W Set hard outside, hard inside jaws & wrench.
Ground working surfaces. Mounting from back by using an adapter plate.

Code	Diameter mm	Bore mm	List Price £
3604-125	125	32	632.00
3604-160	160	42	695.00
3604-200	200	55	809.00
3604-250	250	76	1,079.00
3604-315	315	103	1,622.00
3604-400	400	136	3,463.00
3604-500	500	190	6,053.00
3604-630	630	252	8,402.00

3704 – SELF CENTRING SCROLL CHUCK – 4 JAW



Steel, plain back, rear mount, solid jaw.
C/W Set hard outside, hard inside jaws & wrench.
Ground working surfaces. Mounting from back by using an adapter plate.

Code	Diameter mm	Bore mm	List Price £
3704-125	125	35.5	941.00
3704-160	160	42	1,051.00
3704-200	200	55	1,342.00
3704-250	250	76	1,595.00
3704-315	315	103	2,412.00
3704-400	400	136	5,151.00
3704-500	500	190	11,440.00

4304 – INDEPENDENT CHUCK - 4 JAW



Cast iron, plain back, solid jaw. C/W Set hard solid reversible jaws & wrench. Ground working surfaces. Mounting from front or back with an adapter plate.

Code	Diameter mm	Bore mm	List Price £
4304-200	200	50	855.00
4304-250	250	65	1,060.00
4304-315	315	80	1,367.00
4304-400	400	100	2,008.00
4304-500	500	125	3,712.00
4304-630	630	160	4,793.00

4306 – INDEPENDENT CHUCK – 4 JAW



Steel, plain back, solid jaw. C/W Set hard solid reversible jaws & wrench. Ground working surfaces. Mounting from front or back with an adapter plate.

Code	Diameter mm	Bore mm	List Price £
4306-100	100	25	791.00
4306-160	160	42	871.00
4306-200	200	50	1,177.00
4306-250	250	65	1,334.00
4306-315	315	80	1,785.00
4306-400	400	100	2,515.00
4306-500	500	125	4,565.00
4306-630	630	160	6,894.00

3804 – SELF CENTRING SCROLL CHUCK 6-JAW



Cast iron, plain back, rear mount, solid jaw.
C/W Set hard outside, hard inside jaws and wrench.
Ground working surfaces. Mounting from rear with an adapter plate.

Code	Size mm	Bore mm	List Price £
3804-200	200	55	1,878.00
3804-250	250	76	2,153.00
3804-315	315	103	2,927.00
3804-400	400	136	5,557.00

3864 – SELF CENTRING SCROLL CHUCK 6-JAW



Steel, fine adjustment chuck for use with fine adjustment adapter. Plain back, front mount.
C/W Set hard outside, hard inside jaws and wrench.

Code	Size mm	Bore mm	List Price £
3864-125	125	35	1,435.00
3864-160	160	42	1,555.00
3864-200	200	55	1,914.00
3864-250	250	76	2,124.00
3864-315	315	103	3,200.00
3864-400	400	136	6,394.00

3866 – 6-JAW LEVER SCROLL CHUCK



For grinding twist drills and other cutting tools.
Fine adjustment on sizes 125, 160 & 200mm
C/W Set hard solid jaws and operating lever.

Code	Size mm	List Price £
3866-80	80	967.00
3866-100	100	1,198.00
3866-125	125	1,395.00



Best of 2024

3244 – 3 JAW SCROLL CHUCK CAMLOCK MOUNT



Cast iron, solid jaw, DIN 55029 Camlock mount (no adapter needed). C/W Set hard outside jaws, hard inside jaws & wrench. Ground working surfaces.

Code	Chuck Size mm	Camlock Mount	List Price £
3244-160-3	160	D1-3	715.00
3244-160-4	160	D1-4	715.00
3244-160-5	160	D1-5	715.00
3244-200-4	200	D1-4	931.00
3244-200-5	200	D1-5	931.00
3244-200-6	200	D1-6	931.00
3244-250-6	250	D1-6	1,209.00
3244-250-8	250	D1-8	1,209.00
3244-315-6	315	D1-6	1,811.00
3244-315-8	315	D1-8	1,811.00
3244-315-11	315	D1-11	1,811.00

3544 – 3 JAW SCROLL CHUCK CAMLOCK MOUNT



Steel, solid jaw, DIN 55029 Camlock mount (no adapter needed). C/W Set hard outside jaws, hard inside jaws & wrench. Ground working surfaces.

Code	Chuck Size mm	Camlock Mount	List Price £
3544-125-3	125	D1-3	879.00
3544-125-4	125	D1-4	879.00
3544-160-4	160	D1-4	915.00
3544-160-5	160	D1-5	915.00
3544-200-4	200	D1-4	1,186.00
3544-200-5	200	D1-5	1,186.00
3544-200-6	200	D1-6	1,186.00
3544-250-6	250	D1-6	1,408.00
3544-250-8	250	D1-8	1,408.00
3544-315-6	315	D1-6	2,058.00
3544-315-8	315	D1-8	2,058.00
3544-315-11	315	D1-11	2,058.00

4344 – 4 JAW INDEPENDENT CHUCK CAMLOCK MOUNT



Cast iron, solid jaw, DIN 55029 Camlock mount (no adapter needed). C/W Set hard reversible jaws & wrench. Ground working surfaces.

Code	Chuck Size mm	Camlock Mount	List Price £
4344-200-4	200	D1-4	995.00
4344-200-6	200	D1-6	995.00
4344-250-6	250	D1-6	1,217.00
4344-250-8	250	D1-8	1,217.00
4344-315-6	315	D1-6	1,502.00
4344-315-8	315	D1-8	1,502.00

3245 – 3 JAW SCROLL CHUCK CAMLOCK MOUNT



Cast iron, 2 piece jaw, DIN 55029 Camlock mount (no adapter needed). C/W Set hard reversible jaws & wrench. Ground working surfaces.

Code	Chuck Size mm	Camlock Mount	List Price £
3245-160-3	160	D1-3	778.00
3245-160-4	160	D1-4	778.00
3245-160-5	160	D1-5	778.00
3245-200-4	200	D1-4	1,100.00
3245-200-5	200	D1-5	1,100.00
3245-200-6	200	D1-6	1,100.00
3245-250-6	250	D1-6	1,348.00
3245-250-8	250	D1-8	1,348.00
3245-315-6	315	D1-6	1,921.00
3245-315-8	315	D1-8	1,921.00
3245-315-11	315	D1-11	1,921.00

3545 – 3 JAW SCROLL CHUCK CAMLOCK MOUNT



Steel, 2 piece jaw, DIN 55029 Camlock mount (no adapter needed). C/W Set hard reversible jaws & wrench. Ground working surfaces.

Code	Chuck Size mm	Camlock Mount	List Price £
3545-125-3	125	D1-3	952.00
3545-125-4	125	D1-4	952.00
3545-160-4	160	D1-4	1,010.00
3545-160-5	160	D1-5	1,010.00
3545-200-4	200	D1-4	1,282.00
3545-200-5	200	D1-5	1,282.00
3545-200-6	200	D1-6	1,282.00
3545-250-6	250	D1-6	1,473.00
3545-250-8	250	D1-8	1,473.00
3545-315-6	315	D1-6	2,086.00
3545-315-8	315	D1-8	2,086.00
3545-315-11	315	D1-11	2,086.00

3911 – COLLET CHUCK



For use with 5C collets, C/W wrench. Plain back front or rear mount.

Code	Diameter mm	Collet	List Price £
3911-125-5C	125	5C	591.00

3960 – COLLET CHUCK WITH FINE ADJUSTMENT



For use with 5C collets, C/W wrench, plain back mount. Will need to mount using fine adjustment adapter from the front.

Code	Diameter mm	Collet	List Price £
3960-125-5C	125	5C	680.00

8210-X - FULLY FINISHED ADAPTER



For use with plain back self centring scroll chucks, front mount. DIN55026

Code	Chuck size mm	A mount	List Price £
8210-125-3A2-X	125	A2-3	126.00
8210-160-4A2-X	160	A2-4	233.00
8210-160-5A2-X	160	A2-5	233.00
8210-200-5A2-X	200	A2-5	248.00
8210-200-6A2-X	200	A2-6	248.00
8210-250-5A2-X	250	A2-5	307.00
8210-250-6A2-X	250	A2-6	307.00
8210-250-8A2-X	250	A2-8	307.00
8210-315-6A2-X	315	A2-6	457.00
8210-315-8A2-X	315	A2-8	457.00

For complete range of adapters including A, C & D type see main catalogue.

8230-X - FULLY FINISHED ADAPTER



For use with plain back self centring scroll chucks, front or rear mount. DIN55027

Code	Chuck size mm	C mount	List Price £
8230-160-4-X	160	C-4	207.00
8230-160-5-X	160	C-5	207.00
8230-160-6-X	160	C-6	207.00
8230-200-5-X	200	C-5	248.00
8230-200-6-X	200	C-6	248.00
8230-250-6-X	250	C-6	308.00
8230-250-8-X	250	C-8	308.00
8230-315-6-X	315	C-6	429.00
8230-315-8-X	315	C-8	429.00
8230-315-11-X	315	C-11	429.00

For complete range of adapters including A, C & D type see main catalogue.

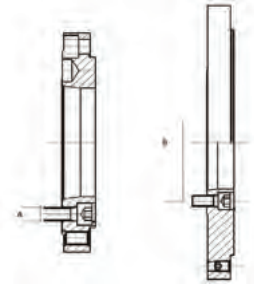
8240-X - FULLY FINISHED ADAPTER



For use with plain back self centring scroll chucks, front or rear mount. DIN55029

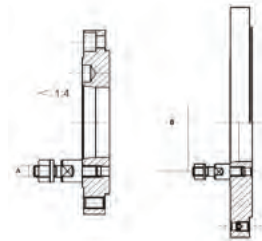
Code	Chuck size mm	Camlock mount	List Price £
8240-125-4-X	125	D1-4	253.00
8240-160-4-X	160	D1-4	297.00
8240-160-5-X	160	D1-5	297.00
8240-200-4-X	200	D1-4	324.00
8240-200-5-X	200	D1-5	324.00
8240-200-6-X	200	D1-6	324.00
8240-250-6-X	250	D1-6	422.00
8240-250-8-X	250	D1-8	422.00
8240-315-6-X	315	D1-6	557.00
8240-315-8-X	315	D1-8	557.00
8240-315-11-X	315	D1-11	557.00

For complete range of adapters including A, C & D type see main catalogue.



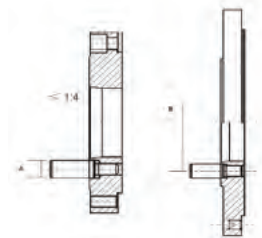
A TYPE MOUNT

Taper Size	A	B	Pcs/Set
3	M8	70.6	3
4	M10	82.6	3
5	M10	104.8	6
6	M12	133.4	6
8	M16	171.4	6
11	M20	235	6
15	M24	330.2	6



C TYPE MOUNT

Taper Size	A	B	Pcs/Set
3	M10x34	75	3
4	M10x39	85	3
5	M10x43	104.8	4
6	M12x50	133.4	4
8	M16x60	171.4	4
11	M20x75	235	6
15	M24x90	330	6



D TYPE MOUNT

Taper Size	A	B	Pcs/Set
3	14.2	70.6	3
4	15.9	82.6	3
5	19	104.8	6
6	22.2	133.4	6
8	25.4	171.4	6
11	30.2	235	6
15	35	330.2	6



Best of 2024

3295 – SELF-CENTRING SCROLL CHUCK - 3 JAW OIL COUNTRY CHUCK WITH LARGE BORE



Cast iron, plain back, rear mount, 2 piece jaws C/W Set base jaws, soft top jaws & wrench. High gripping forces and high accuracy. Ground working surfaces. Mounting from back with adapter plate.

Code	Diameter mm	Bore mm	List Price £
3295-400	400	220	2,912.00
3295-500	500	320	4,297.00
3295-660	660	406	7,080.00

SJM – SOFT SOLID JAWS



For use with BISON 3 jaw self-centring chucks 32-- & 35-- series.

Code	Chuck size mm	List Price £
SJM 3200 3500-80	80	85.00
SJM 3200 3500-100	100	91.00
SJM 3200 3500-125	125	96.00
SJM 3200 3500-160	160	107.00
SJM 3200 3500-200	200	120.00
SJM 3200 3500-250	250	179.00
SJM 3200 3500-315	315	237.00
SJM 3200 3500-400	400	252.00
SJM 3200 3500-500	500	606.00
SJM 3200 3500-630	630	872.00

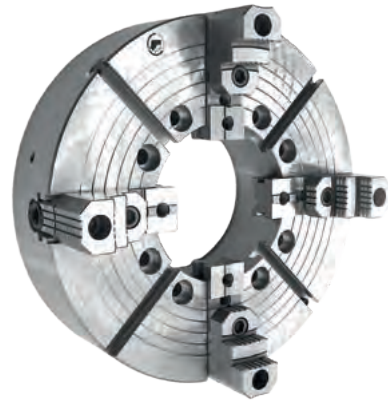
SJZ – HARD SOLID OUTSIDE JAWS



****HIGH STEP OF JAW TO CENTRE OF CHUCK****
For use with BISON 3 jaw self-centring chucks 32-- & 35-- series.

Code	Chuck size mm	List Price £
SJZ 3200 3500-80	80	108.00
SJZ 3200 3500-100	100	132.00
SJZ 3200 3500-125	125	139.00
SJZ 3200 3500-160	160	181.00
SJZ 3200 3500-200	200	186.00
SJZ 3200 3500-250	250	214.00
SJZ 3200 3500-315	315	329.00
SJZ 3200 3500-400	400	422.00
SJZ 3200 3500-500	500	962.00
SJZ 3200 3500-630	630	1,232.00

4317 – INDEPENDENT CHUCK – 4 JAW OIL COUNTRY CHUCK WITH LARGE BORE HD



Steel, A2 mount, 2 piece jaws. C/W Set base jaws, hard reversible top jaws & wrench. High gripping force and high accuracy for heavy duty operations. Ground working surfaces. Other sizes available.

Code	Diameter mm	Bore mm	Mount	List Price £
4317-20-15-8-HD	20"	8"	A2-15	6,868.00
4317-25-15-10.5-HD	25"	10.5"	A2-15	8,643.00
4317-25-20-10.5-HD	25"	10.5"	A2-20	8,643.00
4317-25-20-12.5-HD	25"	12.5"	A2-20	8,643.00

SGM – SOFT TOP JAWS



****FOR USE WITH CHUCKS WITH A TWO PIECE JAW****
For use with BISON 3 jaw self-centring chucks 32-- & 35-- series.

Code	Chuck size mm	List Price £
SGM 3200 3500-125	125	85.00
SGM 3200 3500-160	160	97.00
SGM 3200 3500-200	200	100.00
SGM 3200 3500-250	250	136.00
SGM 3200 3500-315	315	174.00
SGM 3200 3500-400	400	245.00
SGM 3200 3500-500	500	319.00
SGM 3200 3500-630	630	443.00

SJW – HARD SOLID INSIDE JAWS

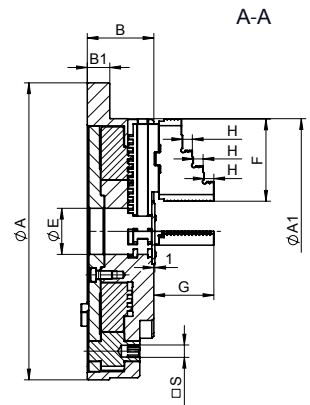
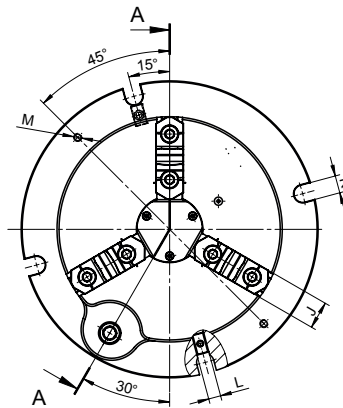


****HIGH STEP OF JAW TO OUTSIDE OF CHUCK****
For use with BISON 3 jaw self-centring chucks 32-- & 35-- series.

Code	Chuck size mm	List Price £
SJW 3200 3500-80	80	109.00
SJW 3200 3500-100	100	128.00
SJW 3200 3500-125	125	160.00
SJW 3200 3500-160	160	186.00
SJW 3200 3500-200	200	193.00
SJW 3200 3500-250	250	226.00
SJW 3200 3500-315	315	377.00
SJW 3200 3500-400	400	417.00
SJW 3200 3500-500	500	960.00
SJW 3200 3500-630	630	1,232.00

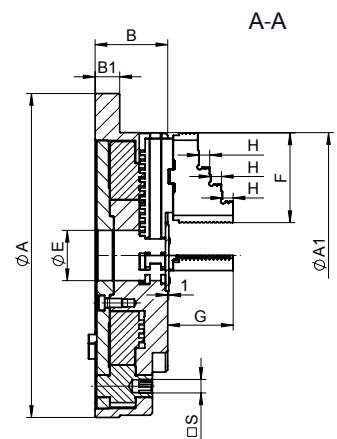
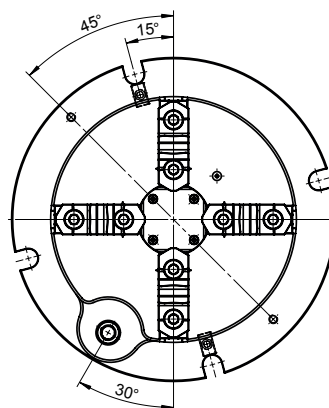
9416 – SELF-CENTERING MILLING DEVICE

- A milling device in the form of a spiral lathe chuck with split jaws, integrated with the base.
- Depending on the adaptation, it can be used on milling machine tables, T-towers, drill tables, surface grinders.
- It has a mechanism drive from the front of the device, you can use a standard wrench with a spring or a ratchet knob with a cap.
- The fixture is sealed against chips, the center by the lid, and the guides by extra teeth on the jaw.
- It has two t-stones and 4 recesses for fastening screws to be fixed to the table/ tower/pallet/. It is possible to attach it by the flange of the device through clamping claws to the machine table.
- The device is low, which is a big advantage for machine tools with a small Z-axis travel, because it does not limit the machine's movements like a chuck with a base.
- When the profile is as low as possible, standard 3200 soft jaw can be used and shaped accordingly.



Code No.	Type	Ø A	Ø A1	B	B1	Ø E	F	G	H	J	K	L	M	□ S	n x J	Weight [kg]	List Price £
329416220500	9416-160 FM US	237	175	52	17	32	67	51	8,5	25	17	12	-	9	3	12,3	£1,677.00
329416230700	9416-200 FM US	290	220	65	22	45	80	58,6	9,5	27	17	12	-	11	3	23,5	£2,027.00
329416240900	9416-250 FM US	350	275	73	22	57	95	63,6	12	32,5	20	18	M8	14	3	37,8	£2,506.00
329416250000	9416-315 FM US	405	335	80	24	80	110	71,4	13	37	20	18	M8	14	3	58,4	£3,015.00

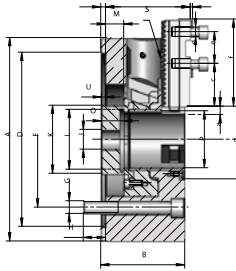
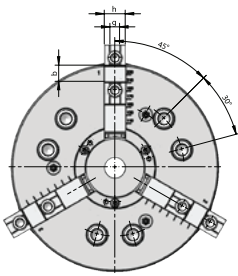
9417 – SELF-CENTERING MILLING DEVICE



Code No.	Type	Ø A	Ø A1	B	B1	Ø E	F	G	H	J	K	L	M	□ S	n x J	Weight [kg]	List Price £
329417220300	9417-160 FM US	237	175	52	17	32	67	51	8,5	25	17	12	-	9	4	12,7	£1,829.00
329417230500	9417-200 FM US	290	220	65	22	45	80	58,6	9,5	27	17	12	-	11	4	24,1	£2,179.00
329417240700	9417-250 FM US	350	275	73	22	57	95	63,6	12	32,5	20	18	M8	14	4	38,6	£2,687.00
329417250900	9417-315 FM US	405	335	80	24	80	110	71,4	13	37	20	18	M8	14	4	59,6	£3,290.00

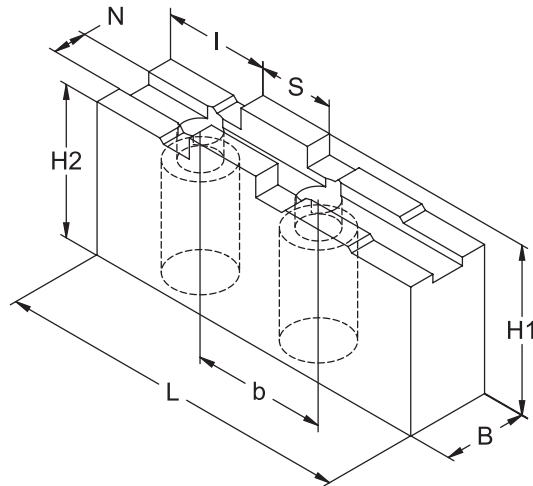


2305 POWER CHUCK WITH QUICK CHANGE JAW SYSTEM



Type		2305-200-45	2305-250-72	2305-315-91
A	mm	206	257	315
B	mm	89	106	106
C	mm	90	107	107
D H6	mm	170	220	300
E	mm	6	6	6
F	mm	133,4	171,4	235
G	-	6xM12	6xM16	6xM20
H	mm	20	28	31
J	mm	20	25	25
K	mm	57	86	108
L max.	-	M52x2	M80x2	M100x2
M (max. Drawbar stroke)	mm	20	23	23
O	mm	24	28	28
Bore P	mm	45	72	91
R	mm	73	100	122
S Tooth pitch)	mm	4,8	6	6
T	mm	3	3	3
Umin.	mm	5	5	4
Umax.	mm	25	28	27
a (max. Jaw stroke)	mm	7,2	8,3	8,3
b	mm	20	20	20
c	mm	37	54	54
d	-	M8x1	M12x1.5	M12x1,5
e	mm	40	40	40
f	mm	90	110	110
g	mm	10	12	12
h	mm	22	26	26
Jaws type	-	F200	F250	F250
Max. pulling force	kN	45	60	60
Max. clamping force	kN	84	120	120
Max. speed	rpm	5500	4500	3500
Moment of inertia	kgm ²	0,04	0,31	1,9
Weight without top jaws	kg	20	35	54
List Price	£	3,147.00	3,859.00	5,061.00

2305 - SOFT JAWS FOR POWER CHUCKS



Code	Type	Chuck size mm	N	S	B	H ₁	H ₂	L	b	I	kg / set	List Price £
398525443000	SGM 200 F	2305-200	10	20	22	47	43	105	40	34	2,0	117.00
398525449700	SGM 250 F	2305-250;315	12	20	32	55	50	125	40	36	3,7	144.00

2405 – K SGM POWER CHUCK



STANDARD BORE

3 Jaw, 60° serrations, with through hole. Plain back will require an adapter to mount to machine. Compatible with Kitagawa jaws.

Supplied with one set of SGM soft jaws

Code	Diameter mm	Bore mm	Jaw Stroke mm	List Price £
2405-160-45K SGM	160	45	3.5	1,201.00
2405-200-52K SGM	200	52	5	1,414.00
2405-250-75K SGM	250	75	6	1,779.00
2405-315-91K SGM	315	91	6	2,544.00

Adaptor plates and connecting parts can also be supplied to suit

2405 – K ZW SGM LARGE BORE POWER CHUCK



LARGE BORE

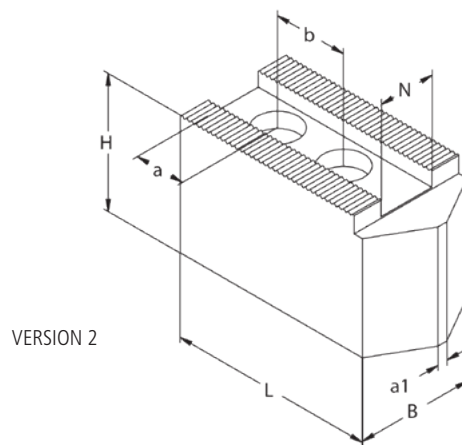
3 Jaw, 60° serrations, with large through hole. Plain back will require an adapter to mount to machine. Compatible with Kitagawa jaws.

Supplied with one set of SGM soft jaws

Code	Diameter mm	Bore mm	Jaw Stroke mm	List Price £
2405-160-53K SGM	160	53	3.5	1,243.00
2405-200-66K SGM	200	66	5	1,588.00
2405-250-81K SGM	250	81	6	1,891.00
2405-315-110K SGM	315	110	6	3,618.00

Adaptor plates and connecting parts can also be supplied to suit

2405 – SOFT JAWS FOR POWER CHUCKS



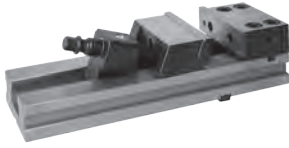
VERSION 2

Code	Type	Chuck size mm	Version	Length mm	Width mm	Height mm	Slot width mm	Hole centres mm	Screw size	Serration	List Price £
398521511800	SGM 2405-160-45K	160	2	65	40	40	12	20	M10	1.5x60°	108.00
398521521000	SGM 2405-200-52K	200	2	95	40	40	14	25	M12	1.5x60°	122.00
398521531100	SGM 2405-250-75K	250	2	105	50	50	16	30	M12	1.5x60°	141.00
398521541300	SGM 2405-315-91K	315	2	110	50	50	21	30	M16	1.5x60°	175.00



Best of 2024

6620 – PRECISION VICE



Designed for precision grinding and milling. Can be ganged or paired. Upgraded successor to the 6577 vice.

Code	Jaw width mm	O/all length mm	Opening mm	List Price £
6620-100-320-165	100	320	165	793.00
6620-125-335-165	125	335	165	952.00
6620-150-425-210	150	425	210	1,198.00
6620-150-475-260	150	475	260	1,247.00
6620-150-520-305	150	520	305	1,377.00
6620-200-535-260	200	535	260	1,802.00
6620-200-585-310	200	585	310	1,857.00
6620-200-635-360	200	635	360	2,040.00

6622 – PRECISION VICE



Movable jaw element. For use with 6624. Revised and upgraded successor of 6568.

Code	Jaw width mm	Base length mm	List Price £
6622-150	150	210	798.00
6622-200	200	240	1,084.00

6530 – TWO ANGLE SWIVEL VICE



Up to 90° angle of incline and 360° swivel. Designed for milling and drilling, when two angle setting is required. C/W handcrank and slot nuts.

Code	Jaw width mm	Opening mm	List Price £
6530-100	100	80	461.00
6530-125	125	100	532.00
6530-160	160	125	679.00

6830 – NC PRECISION COMPACT VICE



Precision milling and grinding for CNC and conventional machines, ensuring exact workpiece positioning and strong clamping forces.

Code	Jaw width mm	Opening Max	List Price £
6830-125	125	116÷336	2,123.00
6830-160	160	131÷464	£3,244.00

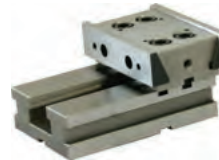
6910 – MACHINE VICE



Prismatic guidance of movable jaw, fully covered lead screw. Jaws hardened and ground for accuracy and repeatability. C/W adjustable end-stop, hand crank & slot nuts.

Code	Jaw width mm	Opening mm	List Price £
6910-105	105	75	828.00
6910-155	155	165	847.00
6910-210	210	205	1,194.00

6624 – PRECISION VICE



Fixed jaw element. For use with 6622. Revised and upgraded successor of 6569-M.

Code	Jaw width mm	Base length mm	List Price £
6624-150	150	221.5	773.00
6624-200	200	253.5	1,069.00

6522 – TWO PIECE VICE



Facilitates the utilisation of the full length of the machine bed. C/W handcrank and slot nuts.

Code	Jaw width mm	O/all height mm	List Price £
6522-160	160	80	464.00
6522-200	200	100	628.00

6542 – QUICK ACTING VICE



Clamping by single rotary movement of lever. V in fixed jaw for round work.

Code	Jaw width mm	Opening mm	List Price £
6542-80	80	80	279.00
6542-100	100	100	339.00

6512 – MACHINE VICE



For use on milling machines, drill presses, etc. Grooved jaw inserts. Lead screw protected against dirt & chips. C/W handcrank & slot nuts.

Code	Jaw width mm	Opening mm	List Price £
6512-100	100	80	265.00
6512-125	125	95	340.00
6512-160	160	125	443.00
6512-200	200	160	668.00
6512-250	250	200	1,348.00

6516 – MACHINE VICE WITH HYDRAULIC SPINDLE



Built in hydraulic spindle makes operation of vice very easy. Adjustment of clamping range by means of two pins. C/W handcrank & slot nuts.

Code	Jaw width mm	Opening mm	List Price £
6516-M125	125	205	1,594.00
6516-M160	160	280	1,879.00
6516-M200	200	375	2,558.00

6517 – CAMLOCK MACHINE VICE



Rear jaw can be positioned using a cam-locking system. Reversible jaw inserts smooth one side and grooved the other. C/W handcrank & slot nuts.

Code	Jaw width mm	Opening mm	List Price £
6517-M125	125	160	853.00
6517-M160	160	180	1,037.00
6517-M200	200	280	1,686.00

6531 – SELF-CENTRING VICE



360° swivel base. Removable grooved jaw inserts. Designed for various types of milling. C/W handcrank & slot nuts.

Code	Jaw width mm	Opening mm	List Price £
6531-125	125	100	554.00
6531-160	160	125	664.00
6531-200	200	160	986.00

6546 – SHAFT HOLDING VICE



Can be used in horizontal and vertical position. Hardened and ground jaws & V block. C/W handcrank & slot nuts.

Code	Jaw length mm	Ø Capacity mm	List Price £
6546-100	100	10 – 83	709.00
6546-125	125	15 – 100	807.00
6546-160	160	50 – 160	POA

6523 – HOLD-TIGHT VICE



Jaws can be located in 4 different positions to increase capacity. For use on work that requires high accuracy and safe clamping. C/W handcrank & slot nuts.

Code	Jaw width mm	Opening mm (standard configuration)	List Price £
6523-155L	155	224	822.00

6543 – DRILL PRESS VICE



Vertical and horizontal V on fixed jaw. Ideal for drilling and light milling operations.

Code	Jaw width mm	Opening mm	List Price £
6543-100M	100	85	112.00
6543-120M	120	120	129.00
6543-150M	150	150	172.00

6710 – PNEUMATICALLY OPERATED VICE

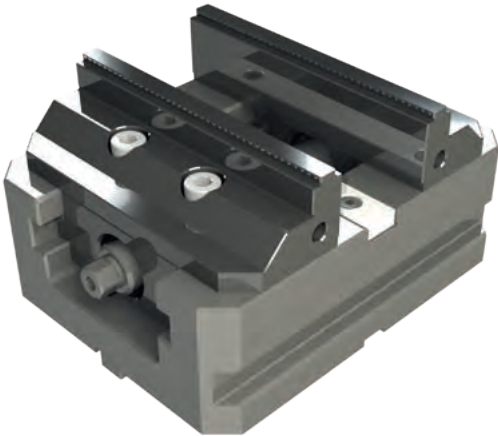


Heavy duty machine vice with high clamping forces. Removable grooved jaw inserts, fitted with a safety valve.

Code	Jaw width mm	Opening mm	List Price £
6710-125	125	100	2,132.00
6710-160	160	125	2,400.00
6710-200	200	160	2,741.00



6650 – SELF-CENTERING PRECISION VISE

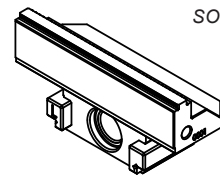
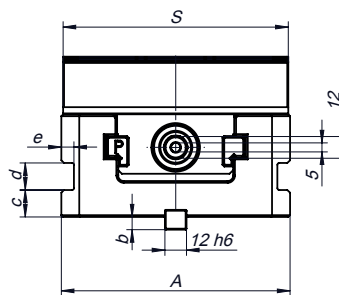
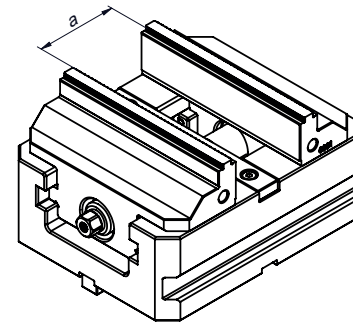
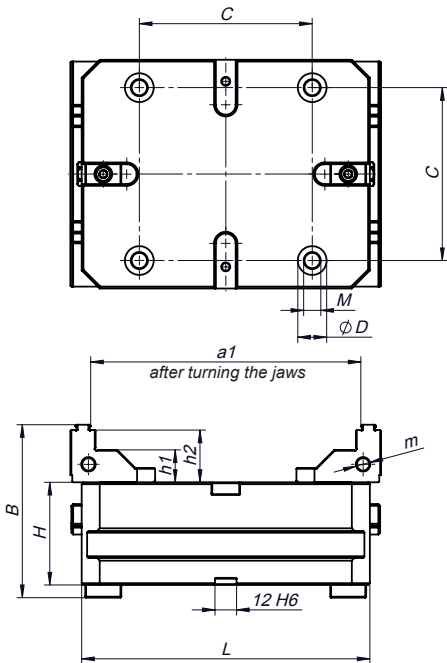


Features:

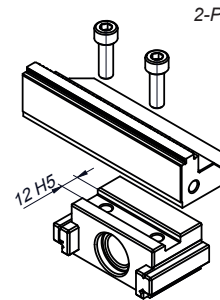
- Compact and symmetrical design makes this vise ideal for 5-axis machining centers.
- Features serrated jaws, using which reduces the area needed for holding the workpiece to only 3 mm. That ensures better access to the workpiece from multiple angles and enables more complex machining operations. The advantage is reducing the machining cycle time, as well as the number of required machining operations and frequency of the tool exchanges.
- The vise can be mounted on the machine table with clamps and T-nuts or with Bison type 6589 quick-fix bases. The vise is also compatible with 52 mm and 96 mm quick-fix bases available on the market (size of the compatible base depends on size of the vise).
- Wide clamping range can be further increased by reversing the jaws.
- The vise jaws have serrated surfaces, which can bite in the raw or heat-treated material. Pre-stamping is not required.
- The jaws also have ground surfaces for clamping machined materials.
- The jaws allow for mounting side-stops.
- The operating screw is heat-treated for increased service time.
- The vises with 2-piece jaws allow for exchanging the hard top jaws with soft top jaws. The soft top jaws can be machined for clamping parts of irregular shapes.
- Self-centering clamping action distributes the clamping force between both jaws. The force is more evenly distributed across the area of the workpiece, minimizing the risk of damage or deformation.

Additional accessories:

- Soft jaws
- Fastening pins
- Side Stop



SOLID JAW



2-PIECE JAW

ACCESSORIES

Code No.	Type	S	L	H	A	B	C	ØD	M	a	a1	h1	h2	m	b	c	d	e	Centering accuracy [mm]	Weight [kg]	Jaw type	Soft jaws set	Fastening pins	List Price £
326650210000	6650-80-105 SJ	80	105	38	82	70,5	52	12	M8	6÷56	56÷91	12	22	M6	7,5	13	12	6	0,02	2,5	solid	-	6589-M8 ZP SL 326000000900	£676.00
326650010800	6650-80-105	80	105	38	82	70,5	52	12	M8	6÷56	56÷91	12	22	M6	7,5	13	12	6	0,05	2,5	2-piece	SGM 6650-80 398267711900	6589-M8 ZP SL 326000000900	£688.00
326650230300	6650-125-160 SJ	125	160	57	127	96	96	16	M10	6÷80	72÷150	18	29	M8	7	15	15	7	0,02	8,75	solid	-	6589-M10 ZP SL 326000000700	£800.00
326650030100	6650-125-160	125	160	57	127	96	96	16	M10	6÷80	72÷150	18	29	M8	7	15	15	7	0,05	8,75	2-piece	SGM 6650-125 398267711900	6589-M10 ZP SL 326000000700	£876.00
326650233100	6650-125-310 SJ	125	310	57	127	96	96	16	M10	6÷230	72÷300	18	29	M8	7	15	15	7	0,02	14,35	solid	-	6589-M10 ZP SL 326000000700	£908.00
326650033000	6650-125-310	125	310	57	127	96	96	16	M10	6÷230	72÷300	18	29	M8	7	15	15	7	0,05	14,35	2-piece	SGM 6650-125 398267711900	6589-M10 ZP SL 326000000700	£980.00

6589 - Quick-fix mounting base series


Features:

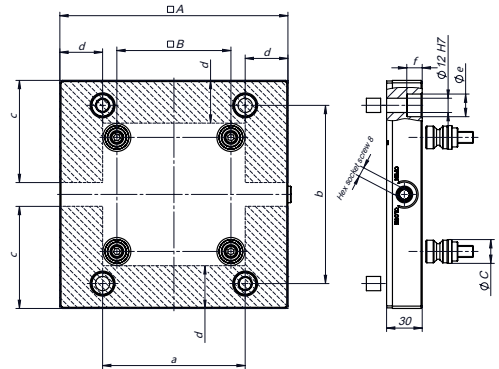
- High fixing repeatability, mounting holes made in $\pm 0,005$ mm tolerance.
- The height of the mounting plate made within 0,01mm tolerance.
- Low-profile mounting plate (30 mm height).
- Quick-action mounting, using only one screw.
- Suitable for mounting vises, other fixtures or direct mounting of workpieces with pre-made mounting holes, matching the location of the mounting pins.
- Pre-made base mounting holes for M10 bolts, available arrangements: 82x82 mm or 120x150mm. Other setups of mounting holes or sockets for clamps available on request.



Code No.	Type	A	B	C	a*	b*	c	d	e	f	List Price £
326589010700	6589-105x105-52	105	52	16	82	82	44	16	16,8	11	£593.00
326589030000	6589-192x192-96	192	96	20	120	150	86	36	19	13	£606.00

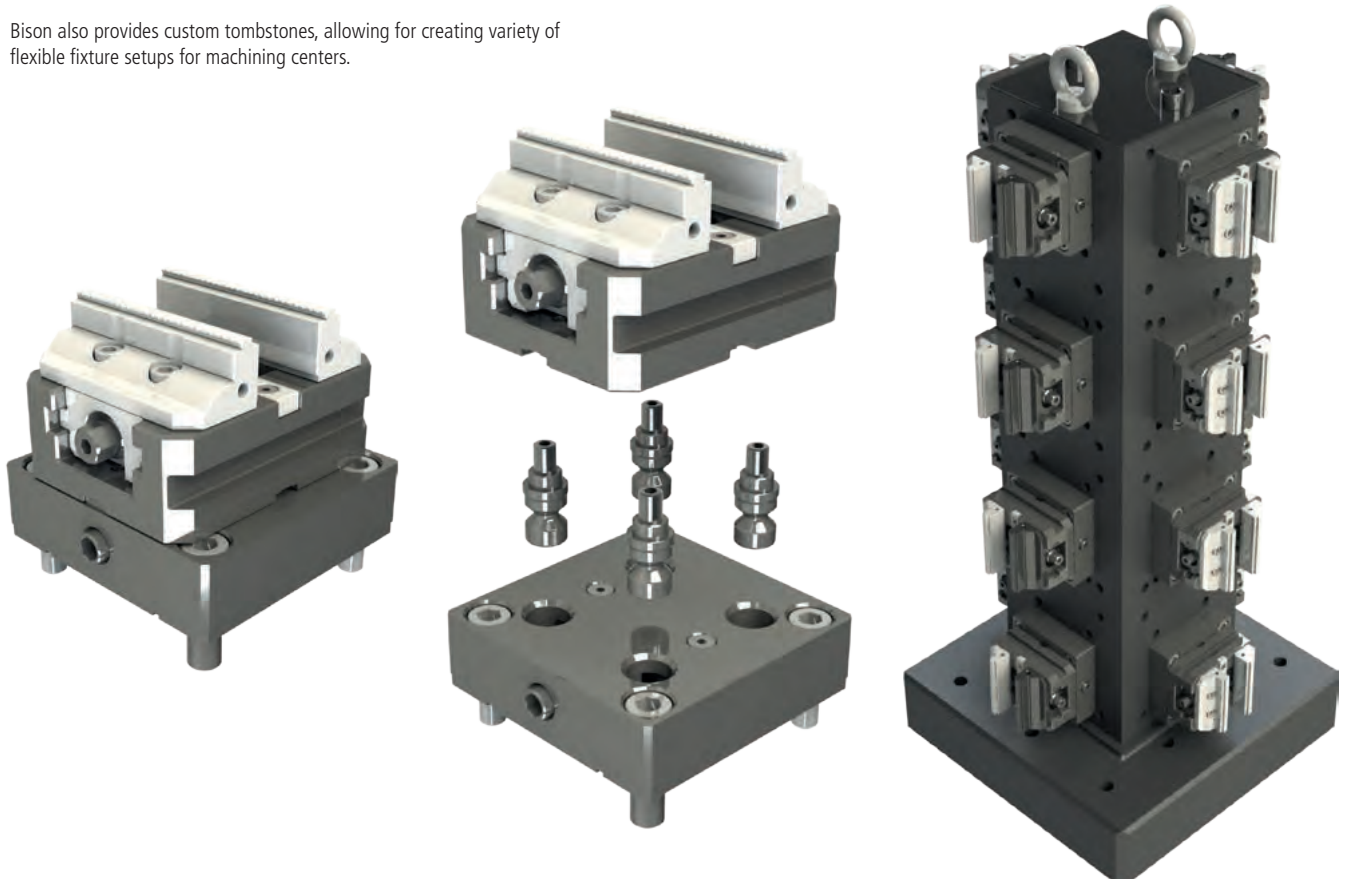
* Standard location of mounting pins, custom setups available on request.

 Machinable area for mounting holes or sockets for clamps - made on customer's request.



1415-500 QA

Bison also provides custom tombstones, allowing for creating variety of flexible fixture setups for machining centers.





5859 – ROTARY TABLE



Can be used vertically or horizontally.
Worm gear can be disengaged for rapid indexing.

Code	Table Ø mm	Worm ratio	List Price £
5859-160	160	1:60	4,222.00
5859-200	200	1:60	4,332.00
5859-250	250	1:90	5,299.00
5859-320	320	1:90	5,907.00

5901 & 5911 INDEXING FIXTURES



Horizontal / Vertical – Chuck not included
Compact design with two types of indexing;
1. Basic 2,3,4,6,8,12 and 24 divisions
2. Angular 360° in 1° increments
Indexing accuracy 2'
Compatible with plain back front mount chucks.

Code	Chuck size mm	Centre height mm	List Price £
5901-100	125	100	2,413.00
5901-125	160	125	2,500.00
5901-160	200	160	2,982.00
5911-200	250	200	6,659.00

5818 – TAILSTOCK



Designed for use with indexing fixtures & rotary tables.

Code	MT	Centre height mm	List Price £
5818-100	2	100	559.00
5818-125	2	125	599.00
5818-160	3	160	707.00
5818-200	4	200	875.00
5818-250	4	250	1,000.00

5819 – ADJUSTABLE HEIGHT TAILSTOCK



Designed for use with indexing fixtures & rotary tables. Height is adjusted by means of a screw, after adjustment the spindle is locked in a vertical position.

Code	MT	Centre height mm	List Price £
5819-95-130	2	95-130	1,243.00
5819-130-170	3	130-170	1,307.00
5819-170-200	3	170-200	1,443.00
5819-220-250	4	220-250	1,859.00

5150 – ANGLE PLATES



Easily set at any angle between 0 - 90° in 5° graduations.

Code - size mm	T slot mm	Max work weight kg	List Price £
5150-250X315	14	100	1,564.00

5155 – ANGLE PLATES



Easily set at any angle between 0 - 90° in 5° graduations. Additional adjustment between 0 - 60° range by means of a gauge block.

Code - size mm	T slot mm	Max work weight kg	List Price £
5155-250X315	14	100	1,771.00

9210 – HAND PRESS



Manually operated.

Code	Capacity mm	O/all height when closed mm	List Price £
9210-485	250	485	667.00

1250 – HEAVY DUTY BENCH VICE



Covered lead screw to keep dirt out.
Rugged heavy duty design.

Code	Jaw width mm	Opening mm	List Price £
1250-63L	63	63	117.00
1250-80L	80	80	126.00
1250-100L	100	80	135.00
1250-125L	125	100	146.00
1250-150L	150	125	193.00
1250-175L	175	150	230.00

9171 – MSP – BOX JAWS



Set of 4 box jaws with Jakob power MSP screws. Steel body with hardened and ground guideways. Hardened clamping jaws HRC 57-60. High clamping force with minimum operator effort.

Code	Clamping force	Weight per jaw	Size mm LxWxH	List Price £
9171-430-20T MSP	200 kN	164 kg	430x330x150	P.O.A

9171 – MSPD – BOX JAWS



Set of 4 box jaws with Jakob power MSPD screws. Steel body with hardened and ground guideways. Hardened clamping jaws HRC 57-60. High clamping force with minimum operator effort.

Code	Clamping force	Weight per jaw	Size mm LxWxH	List Price £
9171-630-40T MSPD	400 kN	705 kg	630x448x410	P.O.A

9170 – FACE PLATE JAWS

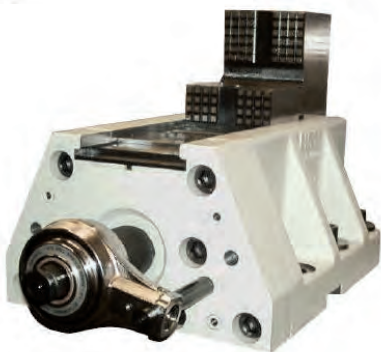
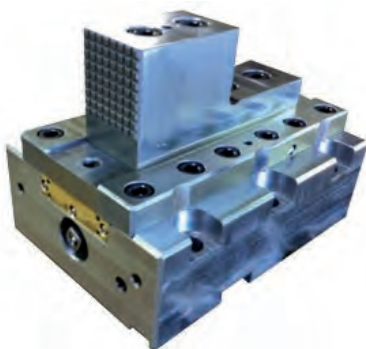


Primarily for use on face plates for holding irregular shaped parts. (Set of 4)

Code	O/all width mm	O/all height mm	Clamping force KN	List Price £
9170-150	130	159.8	28	2,506.00
9170-200	140	169.8	35	3,509.00

SPECIAL BOX JAWS

Special Box Jaws and Power Box Jaws can be designed and manufactured to meet your requirements. To start the process of obtaining a price, simply complete the special request form on page 241 of the 2014 main catalogue and fax or email or if you need some assistance, contact us and we can arrange for a sales engineer to call. Below are examples of special Box Jaws previously designed and manufactured.

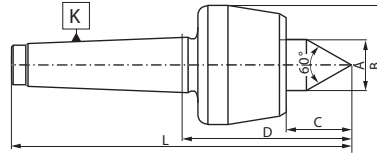




8811R

REVOLVING TAILSTOCK CENTRES WITH 60° TIP ANGLE

- Large variety of models for different applications.
- Max concentricity deviation 0.003 to 0.01 (see chart).



KMT	Max. weight	Max. RPM	Precision				Standard				A	B	C	D	L
			Type	Max. runout	Part No.	List price £	Type	Max. runout	Part No.	List Price £					
1	100	7000					8811R-1	0,005	800006761	128.00	15	36,0	17,0	60,5	114
2	200	7000	8811-2RP	0,003	800006762	141.00	8811R-2	0,005	800006763	128.00	20	45,0	23,5	64,5	128,5
3	400	6300	8811-3 RLP*	0,003	800006766	224.00	8811-3 RL*	0,005	800006623	139.00	22	50,0	27,5	70,0	151
3	500	5000	8811-3RP	0,003	800006764	178.00	8811R-3	0,005	800006765	159.00	25	60,0	30,5	79,0	160
4	800	3800	8811-4RP	0,003	800006767	298.00	8811R-4	0,005	800006624	270.00	32	70,0	40,0	101,5	204
5	2000	3000	8811-5RP	0,003	800006768	373.00	8811R-5	0,005	800006625	339.00	40	90,0	49,5	128	257,5
6	3500	2600					8811R-6	0,01	800006769	604.00	50	105,0	57,5	152	334
6	5000	1500					8811-6 RC**	0,01	800006770	1,413.00	62,4	140,0	67,0	194	376

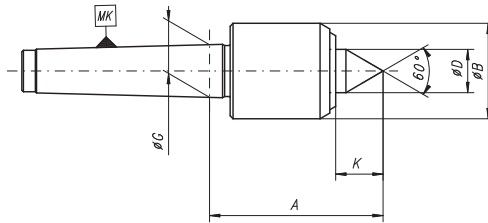
* Slim body design

** Heavy Duty

8812R

REVOLVING TAILSTOCK CENTRES WITH SMALLER BODY DIAMETER

- Small body with 60 degree tip angle for finishing, rough turning and grinding use.
- Max concentricity deviation 0.005 to 0.01 (see chart).

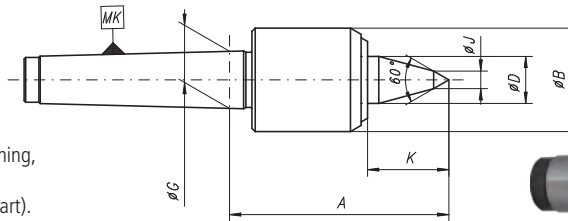


Type	KMT	A	B	D	G	K	Max. weight	Max. RPM	Max. runout	Part No.	List Price £
8812R-2	2	62	32	15	17,780	18	200	7000	0,005	800006024	159.00
8812R-3	3	62	34	15	23,825	18	400	7000	0,005	800006705	172.00
8812R-4	4	75,5	42	20	31,267	25	800	6300	0,005	800006706	230.00
8812R-5	5	104	58	30	44,399	34	1600	4300	0,01	800006707	313.00
8812R-6	6	143	80	42	63,348	49	3500	3000	0,02	800006708	544.00

8813R

REVOLVING TAILSTOCK CENTRES WITH SMALLER BODY DIAMETER WITH EXTENDED POINT

- Small body diameter with extended point for finishing, rough turning and grinding use.
- Max concentricity deviation 0.008 to 0.01 (see chart).

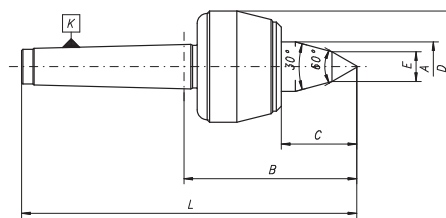


Type	MT	A	B	D	G	K	J	Max. weight	Max. RPM	Max. runout	Part No.	List Price £
8813R-2	2	73	32	15	17,780	29	10	170	7000	0,008	800006709	164.00
8813R-3	3	74	34	15	23,825	30	11	340	7000	0,008	800006710	180.00
8813R-4	4	88,5	42	20	31,267	38	13	700	6300	0,008	800006245	253.00
8813R-5	5	119	58	30	44,399	49	14	1400	4300	0,01	800006711	357.00
8813R-6	6	164	80	42	63,348	70	18	3000	3000	0,02	800006712	609.00

8814R

REVOLVING TAILSTOCK CENTRES WITH EXTENDED POINT

- For Heavy Duty use.
- Max concentricity deviation 0.005 to 0.010 (see chart).



Type	MT	A	B	C	D	E	L	Max. weight	Max. RPM	Max. runout	Part No.	List Price £
8814R-1	1	15	66,5	23,0	36	9	120,0	80	7000	0,010	800006536	140.00
8814R-2	2	20	74,5	33,5	45	10	138,5	140	7000	0,005	800006537	179.00
8814R-3	3	25	92,0	43,5	60	12	173,0	400	5000	0,005	800006538	179.00
8814R-4	4	32	113,5	52,0	70	14	216,0	500	3800	0,005	800006539	326.00
8814R-5	5	40	144,3	65,3	90	16	272,8	1200	3000	0,005	800005509	409.00
8814R-6	6	50	170,5	77,5	105	18	352,5	2500	2600	0,010	800006540	679.00

8811 – ROTATING CENTRE



Heavy duty precision rotating centre with 60° point.

Code	MT	Max weight kg	RPM	List Price £
8811-1-I	1	100	5000	99.00
8811-2-I	2	180	5000	102.00
8811-3-I	3	450	4000	128.00
8811-4-I	4	1000	3000	165.00
8811-5-I	5	1900	2500	254.00
8811-6-I	6	3700	2000	558.00

8824 – EXTENDED POINT ROTATING CENTRE



Rotating centre with radial compensation and adjustment of radial clearance.

Code	MT	Max weight kg	Point length mm	List Price £
8824-2	2	90	38.5	164.00
8824-3	3	180	47.5	182.00
8824-4	4	350	66.5	233.00
8824-5	5	600	86.5	290.00
8824-6	6	1300	94.5	635.00

8825 – TUBE CENTRE



Rotating 60° truncated point for tube work.

Code	MT	Max weight kg	Size mm	List Price £
8825-1	1	100	20-50	109.00
8825-2	2	180	30-60	128.00
8825-2-1	2	300	30-80	159.00
8825-3	3	350	30-80	180.00
8825-3-1	3	550	40-100	218.00
8825-3-2	3	600	50-120	248.00
8825-4	4	600	40-100	199.00
8825-4-1	4	700	50-120	267.00
8825-4-2	4	700	70-140	298.00
8825-5	5	750	50-120	317.00
8825-5-1	5	750	100-170	338.00
8825-6	6	2000	180-292	1,186.00

8882 – TUBE CENTRE WITH INTERCHANGEABLE HEADS



Rotating 75° truncated interchangeable head. Items below supplied as 1 x body + 1 x head.

Code	MT	Max weight kg	Size mm	List Price £
8882-3-80-150	3	700	95-150	321.00
8882-3-80-200	3	700	145-200	435.00
8882-4-100-150	4	1000	95-150	367.00
8882-4-100-200	4	1000	145-200	456.00
8882-4-100-250	4	1000	195-250	506.00
8882-4-125-200	4	1500	145-200	456.00
8882-4-125-250	4	1500	195-250	544.00
8882-4-125-300	4	1500	245-300	593.00
8882-5-125-200	5	1500	145-200	515.00
8882-5-125-250	5	1500	195-250	593.00
8882-5-125-300	5	1500	245-300	742.00
8882-5-160-250	5	1800	195-250	614.00
8882-5-160-300	5	1800	245-300	742.00

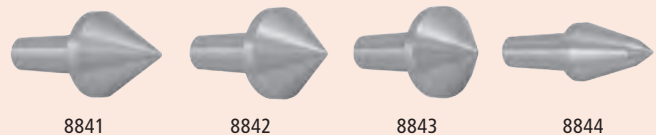
8831-KPL – ROTATING CENTRE WITH INTERCHANGEABLE INSERTS



Precision rotating centre with interchangeable inserts, 8841 60° point, 8842 75° point, 8843 90° point, 8844 60° extended point, 8845 tube centre, 8846 cone point and removal key.

Code	MT	Max weight kg	RPM	List Price £
8831-2/I KPL	2	70	5000	275.00
8831-3/I KPL	3	120	4000	298.00
8831-4/I KPL	4	280	3000	372.00
8831-5/I KPL	5	650	2500	593.00
8831-6/I KPL	6	1200	2000	1,087.00

INCLUDED IN THE SET

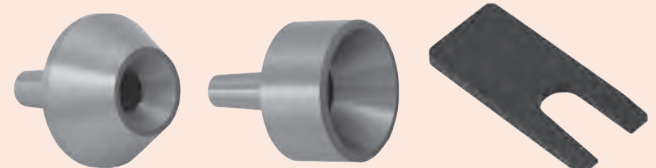


8841

8842

8843

8844



8845

8846

8847



8711 – DEAD CENTRE 60° CARBIDE POINT



Code	MT	Ø mm	List Price £
8711-1	1	12.2	33.00
8711-2	2	18.0	34.00
8711-3	3	24.1	52.00
8711-4	4	31.6	77.00
8711-5	5	44.7	120.00
8711-6	6	63.8	184.00

8712 – DEAD CENTRE 60°



Code	MT	Ø mm	List Price £
8712-1	1	12.2	16.20
8712-2	2	18.0	17.50
8712-3	3	24.1	24.00
8712-4	4	31.6	38.00
8712-5	5	44.7	68.00
8712-6	6	63.8	150.00

8720 – DEAD CENTRE 60° WITH SPANNER FLATS



Code	MT	Ø mm	List Price £
8720-1	1	12.2	19.30
8720-2	2	18.0	19.30
8720-3	3	24.1	25.00
8720-4	4	31.6	45.00
8720-5	5	44.7	76.00
8720-6	6	63.8	166.00

8721 – DEAD CENTRE 60° WITH SPANNER FLATS AND CARBIDE POINT



Code	MT	Ø mm	List Price £
8721-1	1	12.2	41.00
8721-2	2	18.0	41.00
8721-3	3	24.1	54.00
8721-4	4	31.6	85.00
8721-5	5	44.7	149.00
8721-6	6	63.8	297.00

8725 – DEAD CENTRE 60° WITH DRAW OFF NUT



Code	MT	Ø mm	List Price £
8725-1	1	12.2	39.00
8725-2	2	18.0	43.00
8725-3	3	24.1	51.00
8725-4	4	31.6	68.00
8725-5	5	44.7	114.00
8725-6	6	63.8	248.00

8726 – DEAD CENTRE 60° WITH DRAW OFF NUT AND CARBIDE POINT



Code	MT	Ø mm	List Price £
8726-1	1	12.2	53.00
8726-2	2	18.0	56.00
8726-3	3	24.1	74.00
8726-4	4	31.6	109.00
8726-5	5	44.7	141.00
8726-6	6	63.8	250.00

5362 – DRILL CHUCK ARBOR

MT to JT arbor for drill chucks.



Code	MT	JT	List Price £
5362-2-J2	2	2	14.00
5362-2-J3	2	3	14.00
5362-2-J33	2	33	14.00
5362-2-J6	2	6	14.10
5362-3-J2	3	2	15.90
5362-3-J3	3	3	15.90
5362-3-J33	3	33	15.90
5362-3-J6	3	6	15.90
5362-4-J2	4	2	24.00
5362-4-J3	4	3	24.00
5362-4-J6	4	6	24.00

1751 – REDUCTION DRILL SLEEVE

Hardened and ground internally and externally.



Code	Ext MT	Int MT	List Price £
1751-2-1	2	1	13.20
1751-3-1	3	1	15.50
1751-3-2	3	2	15.50
1751-4-1	4	1	19.50
1751-4-2	4	2	19.50
1751-4-3	4	3	19.50
1751-5-1	5	1	34.90
1751-5-2	5	2	34.90
1751-5-3	5	3	34.20
1751-5-4	5	4	34.20
1751-6-3	6	3	87.50
1751-6-4	6	4	87.50
1751-6-5	6	5	87.50

1226 – REDUCTION SLEEVE

For use with VDI and toolpost holders.



Code	OD ø mm	ID ø mm	Length mm	List Price £
1226-25-8	25	8	60	47.00
1226-25-10	25	10	60	47.00
1226-25-12	25	12	60	47.00
1226-25-16	25	16	60	47.00
1226-25-12	25	12	75	47.00
1226-25-16	25	16	75	47.00
1226-32-16	32	16	75	48.00
1226-32-20	32	20	75	48.00
1226-32-25	32	25	75	48.00
1226-40-20	40	20	75	54.00
1226-40-25	40	25	75	54.00
1226-40-32	40	32	75	54.00

5133 – KEYLESS DRILL CHUCK

Precision keyless drill chuck for industrial and CNC use.



Code	Capacity mm	Taper	Run out	List Price £
5133-10-J2	10	J2	0.04	161.00
5133-10-J33	10	J33	0.04	161.00
5133-13-J2	13	J2	0.04	173.00
5133-13-J6	13	J6	0.04	173.00
5133-13-J33	13	J33	0.04	173.00
5133-16-J6	16	J6	0.04	196.00
5133-16-J3	16	J3	0.04	196.00

1761 – EXTENSION DRILL SLEEVES

Hardened and ground internally and externally.



Code	Ext MT	Int MT	Length mm	List Price £
1761-1-1	1	1	145	24.70
1761-1-2	1	2	160	26.40
1761-1-3	1	3	183	28.70
1761-2-1	2	1	160	25.20
1761-2-2	2	2	175	26.60
1761-2-3	2	3	196	31.30
1761-2-4	2	4	221	49.00
1761-3-1	3	1	175	27.80
1761-3-2	3	2	194	28.30
1761-3-3	3	3	215	33.30
1761-3-4	3	4	240	47.40
1761-3-5	3	5	275	71.30
1761-4-1	4	1	200	35.30
1761-4-2	4	2	215	37.70
1761-4-3	4	3	240	38.80
1761-4-4	4	4	265	51.20
1761-4-5	4	5	300	89.40
1761-4-6	4	6	361	152.90
1761-5-1	5	1	232	52.60
1761-5-2	5	2	247	51.60
1761-5-3	5	3	268	54.40
1761-5-4	5	4	300	61.20
1761-5-5	5	5	335	101.20
1761-5-6	5	6	396	177.80
1761-6-1	6	1	294	105.90
1761-6-2	6	2	309	105.90
1761-6-3	6	3	330	105.90
1761-6-4	6	4	355	114.60
1761-6-5	6	5	390	132.00
1761-6-6	6	6	451	223.50

1875 – LATHE SOCKET TO MT

Cylindrical reduction sleeve to MT.



Code	OD ø mm	Int MT	Length mm	List Price £
1875-25-1-75	25	1	75	51.00
1875-25-2-75	25	2	75	51.00
1875-32-2-100	32	2	100	51.00
1875-32-3-100	32	3	100	51.00
1875-40-2-100	40	2	100	61.00
1875-40-3-100	40	3	100	61.00
1875-40-4-120	40	4	120	71.00



DIN 69871

7617 AD – ER COLLET CHUCK

DIN 69871 ER collet chucks (DIN6499)



Code	Taper	ER collet	Gauge length mm	List Price £
7617-30-ER16-60	30	16	60	74.00
7617-40-ER16-60	40	16	60	82.00
7617-40-ER25-60	40	25	60	82.00
7617-40-ER32-70	40	32	70	85.00
7617-40-ER32-130	40	32	130	87.00
7617-40-ER40-70	40	40	70	76.00
7617-50-ER32-70	50	32	70	117.00
7617-50-ER32-130	50	32	130	141.00
7617-50-ER40-80	50	40	80	124.00
7617-50-ER40-130	50	40	130	147.00

7617-S AD – ER SLIM COLLET CHUCK

DIN 69871 ER collet chucks (DIN6499)



Code	Taper	ER collet	Gauge length mm	List Price £
7617-40-ER16-100 S	40	16	100	83.00
7617-40-ER16-150 S	40	16	150	94.00
7617-50-ER16-100 S	50	16	100	139.00
7617-50-ER16-150 S	50	16	150	164.00

7625 AD – SIDE LOCK HOLDER

DIN 69871 side lock end mill holder.



Code	Taper	Bore mm	Gauge length mm	List Price £
7625-30-6-50	30	6	50	53.00
7625-30-10-50	30	10	50	53.00
7625-30-12-50	30	12	50	53.00
7625-30-16-63	30	16	63	53.00
7625-30-20-63	30	20	63	53.00
7625-40-6-50	40	6	50	56.00
7625-40-10-50	40	10	50	56.00
7625-40-12-50	40	12	50	56.00
7625-40-16-63	40	16	63	56.00
7625-40-20-63	40	20	63	57.00
7625-40-25-60	40	25	60	54.00
7625-50-6-63	50	6	63	80.00
7625-50-10-63	50	10	63	76.00
7625-50-12-63	50	12	63	76.00
7625-50-16-63	50	16	63	76.00
7625-50-20-63	50	20	63	76.00
7625-50-25-60	50	25	60	82.00
7625-50-32-70	50	32	70	94.00

Long gauge lengths also available.

7369 A – SHELL MILL ADAPTER

DIN 69871 shell mill adapter for holding face mills.



Code	Taper	Spigot mm	Gauge length mm	List Price £
7369-30-16-35	30	16	35	80.00
7369-30-22-35	30	22	35	80.00
7369-30-27-60	30	27	60	80.00
7369-40-22-60	40	22	60	84.00
7369-40-22-120	40	22	120	99.00
7369-40-27-60	40	27	60	87.00
7369-40-27-120	40	27	120	102.00
7369-40-32-60	40	32	60	90.00
7369-40-32-120	40	32	120	105.00
7369-50-22-60	50	22	60	122.00
7369-50-22-110	50	22	110	147.00
7369-50-27-60	50	27	60	122.00
7369-50-27-110	50	27	110	147.00
7369-50-32-60	50	32	60	131.00
7369-50-32-110	50	32	110	166.00

DIN 69871

1681 AD – MT ADAPTER



DIN 69871 morse taper adapters for drills and reamers.

Code	Taper	MT	Gauge length mm	List Price £
1681-30-1-50	30	1	50	63.00
1681-30-2-60	30	2	60	63.00
1681-30-3-80	30	3	80	63.00
1681-40-1-50	40	1	50	58.00
1681-40-2-50	40	2	50	58.00
1681-40-3-70	40	3	70	58.00
1681-40-4-95	40	4	95	65.00
1681-50-1-45	50	1	45	96.00
1681-50-2-60	50	2	60	96.00
1681-50-3-65	50	3	65	96.00
1681-50-4-95	50	4	95	102.00
1681-50-5-105	50	5	105	111.00

Long gauge lengths also available.

2191 A – BLANK ADAPTER



DIN 69871 machineable blank adapter.

Code	Taper	Ø mm	Length mm	List Price £
2191-40-40-280	40	40	280	134.00
2191-40-63-280	40	63	280	134.00
2191-50-50-330	50	50	330	205.00
2191-50-80-330	50	80	330	234.00

7630 – SHRINK FIT HOLDERS



DIN 69871 for use with tools with cylindrical shank with h6 tolerance.

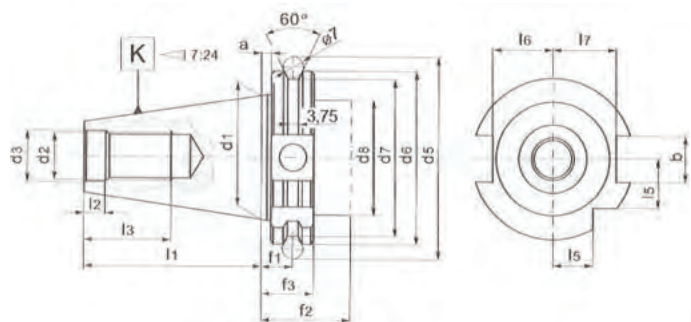
Code	Taper	Bore mm	Gauge length mm	List Price £
7630-40-6-80	40	6	80	177.00
7630-40-10-80	40	10	80	177.00
7630-40-12-80	40	12	80	177.00
7630-40-16-80	40	16	80	177.00
7630-40-20-80	40	20	80	177.00
7630-40-25-100	40	25	100	185.00
7630-50-6-80	50	6	80	361.00
7630-50-10-80	50	10	80	359.00
7630-50-12-80	50	12	80	359.00
7630-50-16-80	50	16	80	358.00
7630-50-20-80	50	20	80	358.00
7630-50-25-100	50	25	100	385.00
7630-50-32-100	50	32	100	385.00

7655 A – KEYLESS DRILL CHUCK



DIN 69871 keyless drill chuck.

Code	Taper	Capacity mm	Gauge length mm	List Price £
7655-40-1-13-87	40	1-13	87	217.00
7655-40-3-16-106	40	3-16	106	239.00
7655-50-1-13-87	50	1-13	87	260.00
7655-50-3-16-90	50	3-16	90	283.00



For all sizes and dimensions see main catalogue.



BT MAS 403

7626 AD – ER COLLET CHUCK

BT ER collet chucks (DIN6499).



Code	Taper	ER collet	Gauge length mm	List Price £
7626-30-ER16-60	30	16	60	75.00
7626-30-ER25-60	30	25	60	69.00
7626-40-ER16-60	40	16	60	77.00
7626-40-ER25-60	40	25	60	72.00
7626-40-ER25-130	40	25	130	96.00
7626-40-ER32-70	40	32	70	78.00
7626-40-ER32-130	40	32	130	88.00
7626-40-ER40-70	40	40	70	77.00
7626-50-ER32-70	50	32	70	113.00
7626-50-ER32-130	50	32	130	143.00
7626-50-ER40-80	50	40	80	113.00
7626-50-ER40-130	50	40	130	156.00

7626-S AD – ER SLIM COLLET CHUCK

BT ER collet chucks (DIN6499).



Code	Taper	ER collet	Gauge length mm	List Price £
7626-40-ER16-100 S	40	16	100	217.00
7626-40-ER16-150 S	40	16	150	224.00
7626-50-ER16-100 S	50	16	100	263.00
7626-50-ER16-150 S	50	16	150	285.00

7388 A – SHELL MILL ADAPTER

BT shell mill adapters for holding face mills.



Code	Taper	Spigot mm	Gauge length mm	List Price £
7388-30-16-43	30	16	43	80.00
7388-30-22-43	30	22	43	80.00
7388-30-27-43	30	27	43	80.00
7388-40-22-52	40	22	52	87.00
7388-40-22-120	40	22	120	103.00
7388-40-27-52	40	27	52	90.00
7388-40-27-120	40	27	120	106.00
7388-40-32-52	40	32	52	94.00
7388-40-32-120	40	32	120	109.00
7388-50-22-65	50	22	65	124.00
7388-50-22-110	50	22	110	148.00
7388-50-27-65	50	27	65	124.00
7388-50-27-110	50	27	110	148.00
7388-50-32-65	50	32	65	133.00
7388-50-32-110	50	32	110	168.00

7624 – SIDE LOCK HOLDER

BT side lock end mill holder.



Code	Taper	Bore mm	Gauge length mm	List Price £
7624-30-6-50	30	6	50	53.00
7624-30-10-50	30	10	50	53.00
7624-30-12-50	30	12	50	53.00
7624-30-16-63	30	16	63	58.00
7624-30-20-63	30	20	63	58.00
7624-40-6-50	40	6	50	57.00
7624-40-10-63	40	10	63	57.00
7624-40-12-63	40	12	63	57.00
7624-40-16-63	40	16	63	57.00
7624-40-20-63	40	20	63	57.00
7624-40-25-60	40	25	60	58.00
7624-50-6-63	50	6	63	92.00
7624-50-10-63	50	10	63	92.00
7624-50-12-63	50	12	80	92.00
7624-50-16-80	50	16	80	92.00
7624-50-20-80	50	20	80	92.00
7624-50-25-60	50	25	60	98.00
7624-50-32-70	50	32	70	98.00

Long gauge lengths also available.

BT MAS 403

1661 AD – MT ADAPTER



BT morse taper adapters for drills and reamers.

Code	Taper	MT	Gauge length mm	List Price £
1661-30-1-50	30	1	50	63.00
1661-30-2-60	30	2	60	63.00
1661-30-3-79	30	3	79	63.00
1661-40-1-50	40	1	50	58.00
1661-40-2-50	40	2	50	58.00
1661-40-3-70	40	3	70	58.00
1661-40-4-95	40	4	95	65.00
1661-50-1-45	50	1	45	96.00
1661-50-2-60	50	2	60	96.00
1661-50-3-65	50	3	65	96.00
1661-50-4-95	50	4	95	102.00
1661-50-5-105	50	5	105	111.00

Long gauge lengths also available.

7656 A – KEYLESS DRILL CHUCK



BT keyless drill chuck.

Code	Taper	Capacity mm	Gauge length mm	List Price £
7656-40-13-95	40	1-13	95	217.00
7656-40-16-100	40	3-16	100	239.00
7656-50-13-105	50	1-13	105	260.00
7656-50-16-110	50	3-16	110	283.00

7632 – SHRINK FIT HOLDERS



BT for use with tools with cylindrical shank with h6 tolerance.

Code	Taper	Bore mm	Gauge length mm	List Price £
7632-40-6-90	40	6	90	177.00
7632-40-10-90	40	10	90	177.00
7632-40-12-90	40	12	90	177.00
7362-40-16-90	40	16	90	177.00
7632-40-20-90	40	20	90	177.00
7632-40-25-100	40	25	100	177.00
7632-50-6-100	50	6	100	383.00
7632-50-10-100	50	10	100	381.00
7632-50-12-100	50	12	100	381.00
7632-50-16-100	50	16	100	381.00
7632-50-20-100	50	20	100	380.00
7632-50-25-110	50	25	110	393.00
7632-50-32-110	50	32	110	394.00

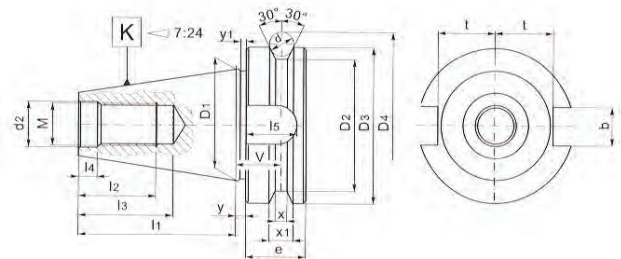
Long gauge lengths also available.

2192 A – BLANK ADAPTER



BT machineable blank adapter.

Code	Taper	Ø mm	Length mm	List Price £
2192-40-40-280	40	40	280	140.00
2192-40-63-280	40	63	280	140.00
2192-50-50-330	50	50	330	205.00
2192-50-80-330	50	80	330	234.00



For all sizes and dimensions see main catalogue.



DIN 2080

7616 – COLLET CHUCK



DIN 2080 ER collet chucks (DIN6499).

Code	Taper	ER collet	Gauge length mm	List Price £
7616-30-ER16-50	30	16	50	73.00
7616-30-ER32-50	30	32	50	73.00
7616-40-ER25-60	40	25	60	74.00
7616-40-ER32-60	40	32	60	74.00
7616-40-ER32-130	40	32	130	85.00
7616-40-ER40-60	40	40	60	79.00
7616-50-ER32-70	50	32	70	118.00
7616-50-ER32-130	50	32	130	135.00
7616-50-ER40-70	50	40	70	118.00
7616-50-ER40-130	50	40	130	141.00

7616 QC – ER QC COLLET CHUCK



DIN 2080 quick change collet chucks (DIN6499).

Code	Taper	ER collet	Gauge length mm	List Price £
7616-30-ER16-50 QC	30	16	50	78.00
7616-30-ER32-50 QC	30	32	50	81.00
7616-40-ER16-100 QC	40	16	100	91.00
7616-40-ER32-60 QC	40	32	60	87.00

7311 – SHELL MILL ADAPTER



DIN 2080 shell mill adapters for holding face mills.

Code	Taper	Spigot mm	Gauge length mm	List Price £
7311-30-16-35	30	16	35	75.00
7311-30-22-35	30	22	35	77.00
7311-30-27-35	30	27	35	79.00
7311-40-22-37	40	22	37	77.00
7311-40-27-37	40	27	37	78.00
7311-40-32-37	40	32	37	80.00
7311-50-22-40	50	22	40	134.00
7311-50-27-40	50	27	40	136.00
7311-50-32-40	50	32	40	148.00

7311 QC – QC SHELL MILL ADAPTER



DIN 2080 quick change shell mill adapters for holding face mills.

Code	Taper	Spigot mm	Gauge length mm	List Price £
7311-30-16-45 QC	30	16	45	90.00
7311-30-22-45 QC	30	22	45	90.00
7311-30-27-45 QC	30	27	45	92.00
7311-40-22-50 QC	40	22	50	90.00
7311-40-27-50 QC	40	27	50	90.00
7311-40-32-50 QC	40	32	50	103.00

7620 – SIDE LOCK HOLDER



DIN 2080 side lock end mill holder.

Code	Taper	Bore mm	Gauge length mm	List Price £
7620-30-6-40	30	6	40	54.00
7620-30-10-40	30	10	40	54.00
7620-30-12-40	30	12	40	54.00
7620-30-16-50	30	16	50	54.00
7620-30-20-63	30	20	63	54.00
7620-40-6-50	40	6	50	58.00
7620-40-10-50	40	10	50	55.00
7620-40-12-50	40	12	50	55.00
7620-40-16-63	40	16	63	55.00
7620-40-20-63	40	20	63	55.00
7620-40-25-60	40	25	60	62.00
7620-50-6-63	50	6	63	91.00
7620-50-10-63	50	10	63	87.00
7620-50-12-63	50	12	63	87.00
7620-50-16-63	50	16	63	87.00
7620-50-20-63	50	20	63	96.00
7620-50-25-60	50	25	60	100.00
7620-50-32-70	50	32	70	105.00

7620 QC – QC SIDE LOCK HOLDER



DIN 2080 side lock end mill holder.

Code	Taper	Bore mm	Gauge length mm	List Price £
7620-30-6-50 QC	30	6	50	70.00
7620-30-10-50 QC	30	10	50	70.00
7620-30-12-50 QC	30	12	50	70.00
7620-30-16-63 QC	30	16	63	70.00
7620-30-20-63 QC	30	20	63	70.00
7620-40-6-50 QC	40	6	50	67.00
7620-40-10-50 QC	40	10	50	63.00
7620-40-12-50 QC	40	12	50	63.00
7620-40-16-63 QC	40	16	63	63.00
7620-40-20-63 QC	40	20	63	63.00
7620-40-25-85 QC	40	25	85	75.00

DIN 2080

1679 – MT ADAPTER



DIN 2080 morse taper adapters for drills and reamers.

Code	Taper	MT	Gauge length mm	List Price £
1679-30-1-50	30	1	50	64.00
1679-30-2-50	30	2	50	64.00
1679-30-3-72	30	3	72	64.00
1679-40-1-50	40	1	50	69.00
1679-40-2-50	40	2	50	69.00
1679-40-3-65	40	3	65	69.00
1679-40-4-95	40	4	95	77.00
1679-50-1-45	50	1	45	108.00
1679-50-2-60	50	2	60	108.00
1679-50-3-65	50	3	65	108.00
1679-50-4-70	50	4	70	108.00
1679-50-5-105	50	5	105	116.00

Long gauge lengths also available.

1679 QC – MT QC ADAPTER



DIN 2080 quick change morse taper adapters for drills and reamers.

Code	Taper	MT	Gauge length mm	List Price £
1679-30-1-50 QC	30	1	50	67.00
1679-30-2-50 QC	30	2	50	67.00
1679-30-3-72 QC	30	3	72	67.00
1679-40-1-50 QC	40	1	50	66.00
1679-40-2-50 QC	40	2	50	66.00
1679-40-3-65 QC	40	3	65	66.00
1679-40-4-95 QC	40	4	95	75.00

Long gauge lengths also available.

7657 – KEYLESS DRILL CHUCK



DIN 2080 keyless drill chuck.

Code	Taper	Capacity mm	Gauge length mm	List Price £
7657-40-13-88	40	1-13	88	217.00
7657-40-16-99	40	3-16	99	239.00
7657-50-13-85	50	1-13	85	260.00
7657-50-16-89	50	3-16	89	283.00

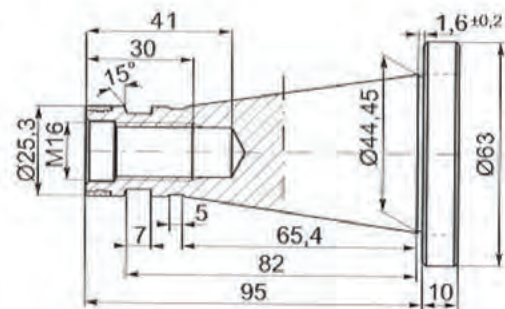
2190 – BLANK ADAPTER



DIN 2080 machineable blank adapter.

Code	Taper	Ø mm	Length mm	List Price £
2190-40-40-280	40	40	280	127.00
2190-40-63-280	40	63	280	126.00
2190-50-50-330	50	50	330	216.00
2190-50-80-330	50	80	330	234.00

Long milling arbors available on request.



For all sizes and dimensions see main catalogue.



7618 – ER COLLETS



ER collets DIN 6499.

Code – ER size	ER	Gripping range mm	List Price £
7618	16	3-2	11.50
7618	16	4-3	11.50
7618	16	5-4	11.50
7618	16	6-5	11.50
7618	16	7-6	11.50
7618	16	8-7	11.50
7618	16	9-8	11.50
7618	16	10-9	11.50
7618	20	3-2	12.40
7618	20	4-3	12.40
7618	20	5-4	12.40
7618	20	6-5	12.40
7618	20	7-6	12.40
7618	20	8-7	12.40
7618	20	9-8	12.40
7618	20	10-9	12.40
7618	20	11-10	12.40
7618	20	12-11	12.40
7618	20	13-12	12.60
7618	25	3-2	12.80
7618	25	4-3	12.80
7618	25	5-4	12.80
7618	25	6-5	12.80
7618	25	7-6	12.80
7618	25	8-7	12.80
7618	25	9-8	12.80
7618	25	10-9	12.80
7618	25	11-10	12.80
7618	25	12-11	12.80
7618	25	13-12	12.80
7618	25	14-13	12.80
7618	25	15-14	12.80
7618	25	16-15	12.80
7618	32	3-2	13.10
7618	32	4-3	13.10
7618	32	5-4	13.10
7618	32	6-5	13.10
7618	32	7-6	13.10
7618	32	8-7	13.10
7618	32	9-8	13.10
7618	32	10-9	13.10
7618	32	11-10	13.10
7618	32	12-11	13.10
7618	32	13-12	13.10
7618	32	14-13	13.10
7618	32	15-14	13.10
7618	32	16-15	13.10
7618	32	17-16	13.10
7618	32	18-17	13.10
7618	32	19-18	13.10
7618	32	20-19	13.10
7618	40	3-2	16.30
7618	40	4-3	16.30
7618	40	5-4	16.30
7618	40	6-5	16.30
7618	40	7-6	16.30
7618	40	8-7	16.30
7618	40	9-8	16.30
7618	40	10-9	16.30
7618	40	11-10	16.30
7618	40	12-11	16.30
7618	40	13-12	16.30



ER collets DIN 6499 continued.

Code – ER size	ER	Gripping range mm	List Price £
7618	40	14-13	16.30
7618	40	15-14	16.30
7618	40	16-15	16.30
7618	40	17-16	16.30
7618	40	18-17	16.30
7618	40	19-18	16.30
7618	40	20-19	16.30
7618	40	21-20	16.30
7618	40	22-21	16.30
7618	40	23-22	16.30
7618	40	24-23	16.30
7618	40	25-24	16.40
7618	40	26-25	17.20

7812 – ER COLLET CHUCK

Straight shank ER collect chuck DIN 6499.



Code	Shank ø mm	Length mm	ER	List Price £
7812-16-ER16-160	16	160	16	76.00
7812-20-ER16-100	20	100	16	71.00
7812-20-ER16-160	20	160	16	76.00

7815 – ER COLLET CHUCK

Straight shank ER collet chuck DIN 6499.



Code	Shank ø mm	Length mm	ER	List Price £
7815-32-ER32-110	32	110	32	74.00
7815-40-ER32-117	40	117	32	81.00

7618-KPL – ER COLLET CHUCK SETS

ER collet sets DIN 6499.



Code	ER	Range mm	No. in set	List Price £
800001905	16	2-10	8	106.00
800001906	20	2-13	11	151.00
800001907	25	2-16	14	195.00
800001908	32	2-20	18	254.00
800001909	40	2-26	24	409.00

3911 – 5C COLLET CHUCK



For use with 5C collets, C/W wrench, plain back mount.

Code	Size mm	Collet	List Price £
3911-125-5C	125	5C	591.00

Will be replaced by 3975 when stocks run out.

8240-X - FULLY FINISHED ADAPTER



For use with plain back self-centring scroll chucks DIN 55029 Camlock mount.

Code	Chuck size mm	Camlock mount	List Price £
8240-125-4-X	125	D1-4	253.00
8240-125-6-X	125	D1-6	P.O.A

Adapters for A and C mount also available.

3960 – 5C COLLET CHUCK FINE ADJUSTMENT



For use with 5C collets, C/W wrench, fine adjustment plain back mount.

Code	Size mm	Collet	List Price £
3960-125-5C	125	5C	680.00

8245 - FULLY FINISHED ADAPTER



For use with fine adjustment plain back self-centring scroll chucks DIN 55029 Camlock mount.

Code	Chuck size mm	Camlock mount	List Price £
8245-125-4	125	D1-4	340.00
8245-125-5	125	D1-5	340.00
8245-125-6	125	D1-6	P.O.A

Adapters for A and C mount also available.

3000 – 5C COLLETS

5C (385E) collets.



Code	Size mm	List Price £
3000-3000-5C-3	3	24.00
3000-3000-5C-4	4	24.00
3000-3000-5C-5	5	24.00
3000-3000-5C-6	6	24.00
3000-3000-5C-7	7	24.00
3000-3000-5C-8	8	24.00
3000-3000-5C-9	9	24.00
3000-3000-5C-10	10	24.00
3000-3000-5C-11	11	24.00
3000-3000-5C-12	12	24.00
3000-3000-5C-13	13	24.00
3000-3000-5C-14	14	24.00
3000-3000-5C-15	15	24.00
3000-3000-5C-16	16	24.00
3000-3000-5C-17	17	24.00
3000-3000-5C-18	18	24.00
3000-3000-5C-19	19	24.00
3000-3000-5C-20	20	24.00
3000-3000-5C-21	21	24.00
3000-3000-5C-22	22	24.00
3000-3000-5C-23	23	24.00
3000-3000-5C-24	24	24.00
3000-3000-5C-25	25	24.00

3000 – 5C COLLET SETS

5C (385E) collets.

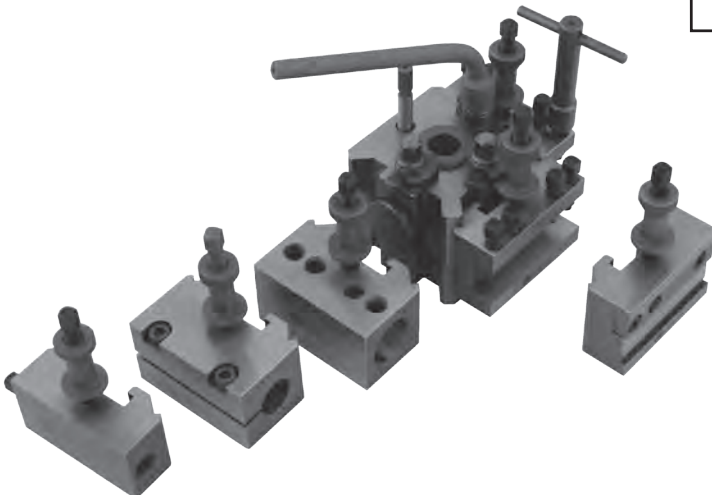
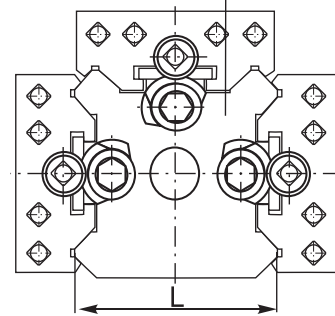
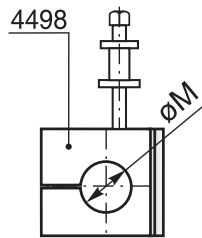
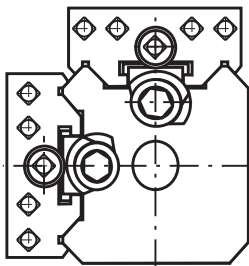
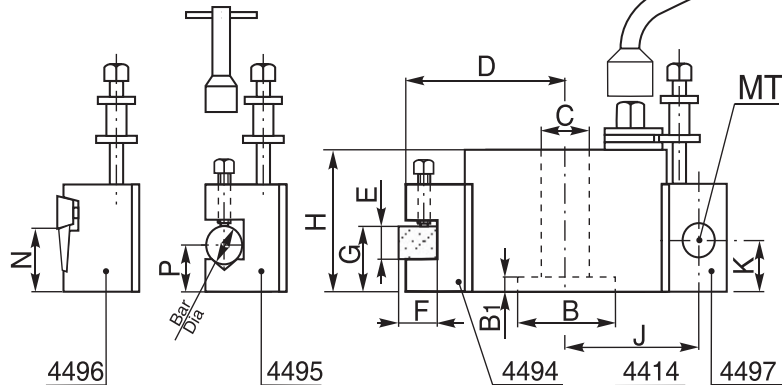
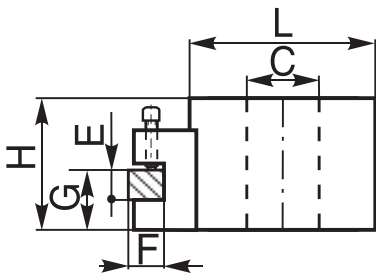
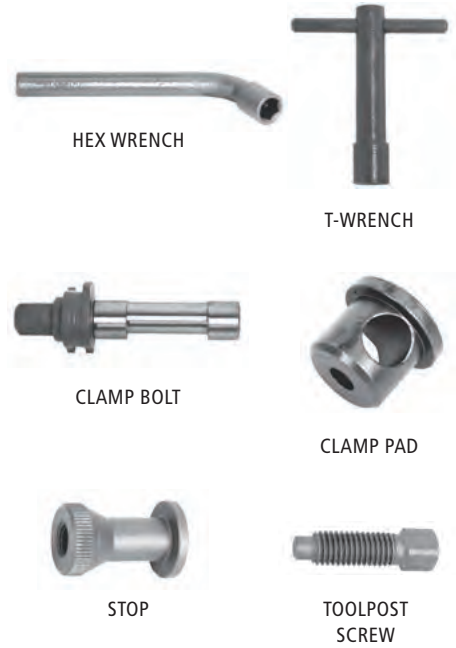


Code	Size mm	Collets in Set	List Price £
3000-3000-5C.26 KP	3-26	24	581.00
3000-3000-5C.45 KP	3-25	45	1,100.00



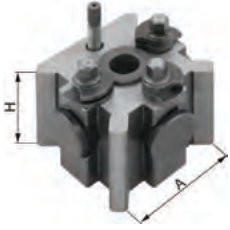
SPARES FOR TOOLPOSTS AND HOLDERS

Product Code	Code	Description	List Price £
800003149	KL 4414-62 HEX L U-6866/0	T.0, T.1, T.1X Hex Wrench	21.00
800003118	KL 4414-82 HEX L U-6178/0	T.2, T.2T Hex Wrench	25.00
800003150	KL4414-100 HEX L U-6874/0	T.3, T.3HX Hex Wrench	30.00
800003029	KL 4414-62X51 8mm	T.0, T.1, T.1X T-Wrench	28.00
800003030	KL 4414-82X71 10mm	T.2, T.2T T-Wrench	30.00
800003028	KL4414-100X108 13.5mm	T.3, T.3HX T-Wrench	32.00
800003148	U-6860/0	T.0, T.1, T.1X Clamp Bolt	46.00
800003117	U-6175/0	T.2 Clamp Bolt	53.00
800003105	U-5757/0	T.2T Clamp Bolt	58.00
800003740	U-6868/0	T.3, T.3HX Clamp Bolt	58.00
800003147	U-6859/0	T.0, T.1, T.1X Clamp Pad	19.20
800003748	U-6174/0	T.2 Clamp Pad	11.60
800003104	U-5756/0	T.2T Clamp Pad	23.00
800003749	U-6867/0	T.3, T.3HX Clamp Pad	18.30
800003151	U-6876/0	T.0, T.1, T.1X Stop	21.00
800003106	U-5762/0	T.2, T.2T Stop	21.00
800003154	U-6880/0	T.3, T.3HX Stop	25.00
800003153	U-6877/1	T.0, T.1, T.1X Toolholder Sq-Head Screws	3.50
800003160	U-7386/1	T.2, T.2T Toolholder Sq-Head Screws	5.30
800003156	U-6881/1	T.3, T.3HX Toolholder Sq-Head Screws	6.90



For full dimensions of toolposts refer to main catalogue.

4414 – QUICK CHANGE TOOLPOST



Quick change tool posts for lathes interchangeable with Dickson.

Code	Type	Size mm	List Price £
800000651	T00M	48 x 37	261.00
800000652	T00B	48 x 42	293.00
800000653	T0	62 x 51	304.00
800000654	T1	62 x 63	343.00
800000655	T1X	62 x 73	351.00
800000656	T2	82 x 71	436.00
800000657	T2T	82 x 76	453.00
800000658	T3	100 x 92	555.00
800000659	T3HX	100 x 108	598.00

4494 – STANDARD TOOLHOLDERS



Code	Size	To fit toolpost	List Price £
800000660	48	T00M, T00B	57.00
800000663	62N	T0	83.00
800000662	62	T1, T1X	98.00
800000665	82N	T2	115.00
800000664	82	T2T	115.00
800000666	100	T3, T3HX	150.00

4495 – VEE TYPE TOOLHOLDERS



Code	Size	To fit toolpost	List Price £
800000667	48	T00M, T00B	57.00
800000670	62N	T0	88.00
800000669	62	T1, T1X	102.00
800000672	82N	T2	117.00
800000671	82	T2T	119.00
800000673	100	T3, T3HX	169.00

4496 – PART OFF TOOLHOLDERS



Code	Size	To fit toolpost	List Price £
800000674	48	T00M, T00B	96.00
800000676	62	T0, T1, T1X	130.00
800000677	82	T2, T2T	155.00
800000678	100	T3, T3HX	208.00

4497 – MORSE TAPER HOLDERS



Code	Size	To fit toolpost	MT	List Price £
800000680	62/1N	T0	1	115.00
800000679	62/1	T1, T1X	1	133.00
800000681	62/2	T1, T1X	2	119.00
800000682	82/2	T2, T2T	2	151.00
800000683	100/3	T3, T3HX	3	194.00

4499 – BORING BAR TOOLHOLDERS



Code	Size	To fit toolpost	Bore mm	List Price £
800000688	62	T0, T1, T1X	25	129.00
800000689	82	T2, T2T	32	145.00
800000690	100	T3, T3HX	40	208.00



BISON

100% MADE IN EUROPE



All products shown are BISON originals and not copies.

All prices are GBP excluding VAT / Carriage may be extra / Our standard terms of sale apply.

Your local distributor