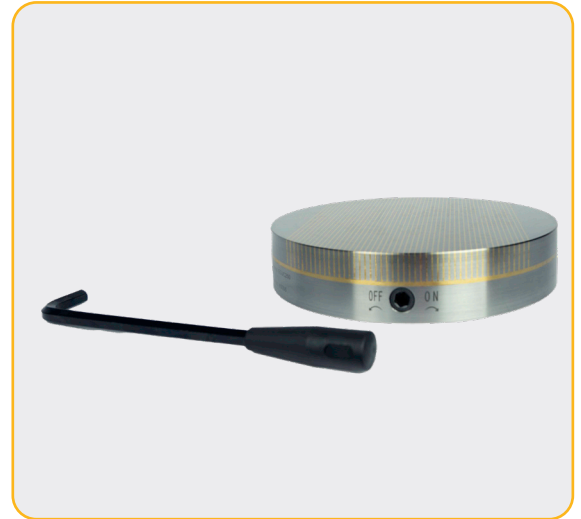


Circular Universal Chuck range provide all-round performance and durability.

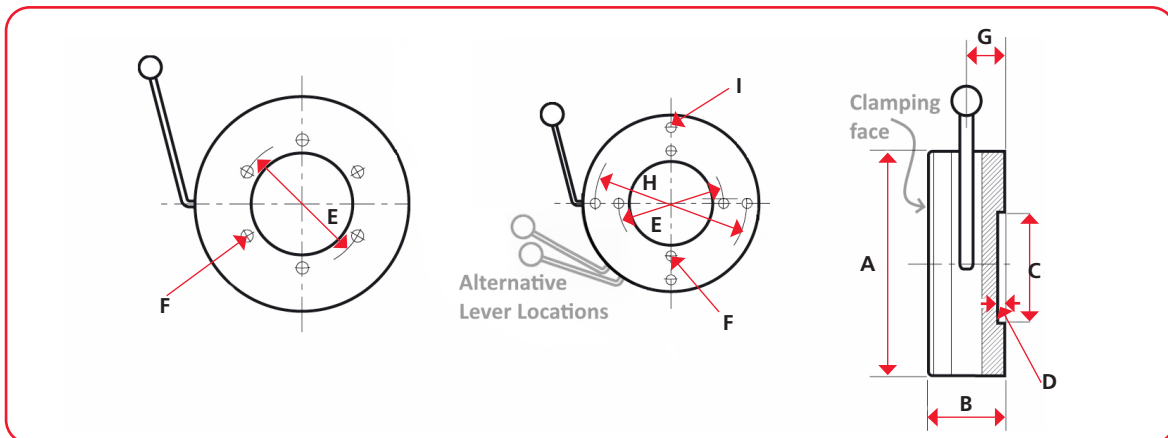
## Features

- Universal pole pattern Pole Pitch of 1mm Brass & 3mm Steel
- Top plate concentrates magnetic energy on to the chuck face
- The chuck top plate can be partially magnetised to aid the correct positioning of the workpiece
- Universal pole pattern to allow for a wider range of thicknesses of material to be clamped
- On thinnest materials, the achievable clamping force is reduced
- Up to 80N/cm<sup>2</sup> maximum holding force (depending on material and part - subject to application)
- Threaded fixing locations on rear side
- Supplied with removable handle



Product Number	A mm	B mm	C mm	D mm	E mm	#1	F	G mm	#2	H	I	Weight kg
ECUC100	100	48	N/A	N/A	70	2	M6	N/A	N/A	N/A	N/A	3
ECUC125	125	48	80	3	95	4	M6	N/A	N/A	N/A	N/A	5
ECUC160	160	48	100	3	120	4	M6	N/A	N/A	N/A	N/A	9
ECUC200	200	52	120	4	160	4	M8	N/A	N/A	N/A	N/A	13
ECUC250	250	52	160	4	180	4	M8	N/A	N/A	N/A	N/A	20

Key			
A	Outside diameter	G	Handle distance
B	Height	H	Outer PCD(2)
C	Recess diameter	#1	Number of holes in PCD1
D	Recess depth	I	Diameter of holes (in PCD2)
E	Inner PCD(1)	#2	Number of holes in PCD2
F	Diameter of holes (in PCD1)		



### Conversions Guide:-

1kg ≈ 2.204lb ≈ 9.806N  
 1lb ≈ 0.453kg ≈ 4.448N  
 1N ≈ 0.101kg ≈ 0.224lb  
 10mm ≈ 0.393in (≈ 25/64in)  
 1in ≈ 25.4mm

(the above conversion values are rounded down)



FM 31278 EMS 616377